

VETERANS' COMMUNITY PARK RESTROOM BUILDING

901 PARK AVE.
MARCO ISLAND, FL 34145



NOTE: RENDERING SHOWN FOR REFERENCE ONLY - ALL INFORMATION FOR BIDDING AND CONSTRUCTION TO BE OBTAINED FROM DRAWINGS ON SUBSEQUENT PAGES, NOT FROM THIS RENDERING.



50 BALD EAGLE DRIVE
MARCO ISLAND, FLORIDA 34145
PHONE (239) 389- 5000

MHK
ARCHITECTURE
& PLANNING

975 6TH AVENUE SOUTH
NAPLES FLORIDA 34102
PHONE: (239) 331-7092
WWW.MHKAP.COM
FLORIDA SEAL: AR 16971

NPS Consulting
MECHANICAL | ELECTRICAL | PLUMBING |
ENGINEERING

944 COUNTRY CLUB BLVD, # 108
CAPE CORAL, FLORIDA 33990
PHONE: (239) 770-0513
NPSCONSULTING@OUTLOOK.COM
C A # 3 2 2 3 6

CRONIN
ENGINEERING

6627 WILLOW PARK DRIVE
UNIT # 201
NAPLES, FLORIDA 34109
PHONE (239) 893 - 2157

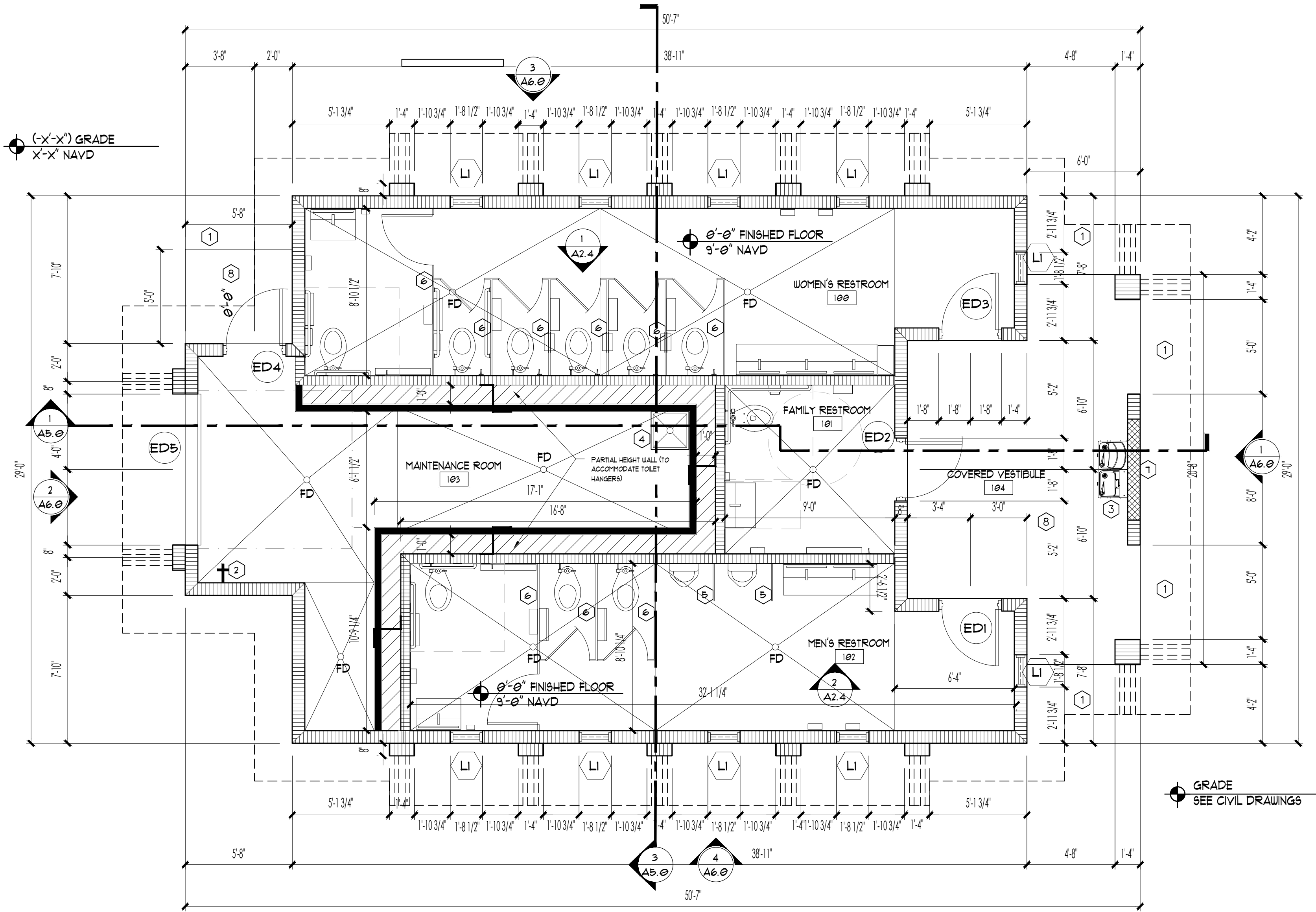
Kimley»Horn

1777 MAIN STREET
SUITE # 200
SARASOTA, FLORIDA 34236
PHONE (941) 379 - 7620

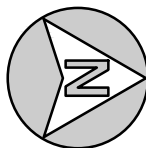
Manhattan
Building excellence.

3705-1 WESTVIEW DRIVE
NAPLES, FLORIDA 34104
PHONE (239) 643 - 6000

This document, together with the concepts and designs presented herein, as an instrument of service, is intended only for the specific purpose and client for which it was prepared. Reuse of and improper reliance on this document without written authorization and adaptation by Kinley-Horn and Associates, Inc. shall be without liability to Kinley-Horn and Associates, Inc.



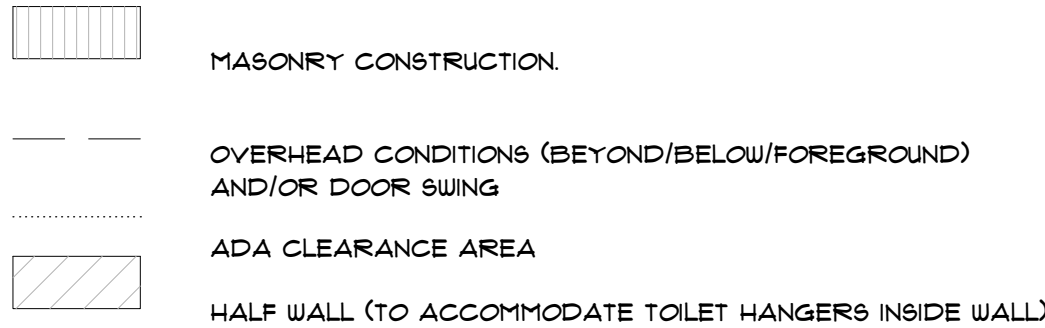
FLOOR PLAN
SCALE: 1/4" = 1'-0"



GENERAL FLOOR PLAN NOTES:

1. DIMENSIONS ARE FROM FACE OF FINISHED SURFACE TO FACE OF FINISHED SURFACE AND FROM CENTERLINE OF COLUMN UNLESS NOTED OTHERWISE
2. FIN = FINISHED FACE; FROM FACE OF GYPSUM TO FACE OF GYPSUM
3. AFF = ABOVE FINISHED FLOOR
4. NOT USED.

GRAPHIC LEGEND:



FLOOR PLAN KEYNOTES:

- 1 COORDINATE EXTERIOR HARDSCAPE WITH CIVIL AND LANDSCAPE PLANS
- 2 HOSEBIB
- 3 HI-LOW DRINKING FOUNTAIN, SEE MEP
- 4 MOP SINK, SEE PLUMBING DRAWINGS
- 5 BRADLEY #4, 3/8" STAINLESS STEEL URINAL PARTITION WITH CONTINUOUS STAINLESS STEEL WALL BRACKETS
- 6 BRADLEY SERIES 400 OVERHEAD BRACED STAINLESS STEEL TOILET PARTITIONS WITH BRUSHED SATIN FINISH AND CONTINUOUS STAINLESS STEEL WALL BRACKETS, LOCKER/STORAGE CLOSET DOORS WITH CONTINUOUS, SPRING-LOADED STAINLESS STEEL HINGES
- 7 HATCH INDICATES CMU 6" AFF
- 8 EXTERIOR AREAS WITH CONCRETE SLAB FLOORS - SEE NOTE 1 FOR ADDITIONAL INFORMATION

INTERIOR PAINTING BASIS OF DESIGN:

PORTLAND CEMENT PLASTER (10PH OR LOWER):

- PRIMER: PPG PAINTS: 4-809 SERIES PERMA-CRETE ® INT./EXT.
- ACRYLIC MASONRY SURFACE SEALER
- FINISH: PPG PAINTS: 139 SERIES ACRI-SHIELD EXTERIOR HOUSE AND TRIM SATIN-ACRYLIC LATEX

PORTLAND CEMENT PLASTER (10-13PH)

- PRIMER: PPG PAINTS: 4-503 FERMA-CRETE ® INTERIOR/EXTERIOR ALKALI RESISTANT PRIMER
- FINISH: PPG PAINTS: 139 SERIES ACRI-SHIELD EXTERIOR HOUSE AND TRIM SATIN-ACRYLIC LATEX

CONCRETE MASONRY UNITS:

- FILLER: PPG: 6-1 SPEEDHIDE ®
- INTERMEDIATE: PPG: 1406 ULTRAHIDE ® 250
- TOPCOAT: PPG: 1406 ULTRAHIDE ® 250

GYP-SUM BOARD:

- PRIMER: PPG: 12-300 SPEEDHIDE ® PRO-EV
- INTERMEDIATE: PPG: 12-510 SPEEDHIDE ® PRO-EV
- TOPCOAT: 12-510 SPEEDHIDE ® PRO-EV

HOLLOW METAL FRAMES (FERROUS METALS):

- PRIMER: PPG: 90-912 PITT-TECH PLUS ®
- 1ST & 2ND FINISH COAT: PPG: 90-1210 PITT-TECH PLUS ®

WOOD:

- PRIMER: PPG: 17-951 SEAL GRIP ®
- INTERMEDIATE: PPG: 12-510 SPEEDHIDE ® PRO-EV
- TOPCOAT: PPG: 12-510 SPEEDHIDE ® PRO-EV

ACCEPTABLE ALTERNATE MANUFACTURERS:

- BENJAMIN MOORE
- SHERWIN-WILLIAMS
- BEHR

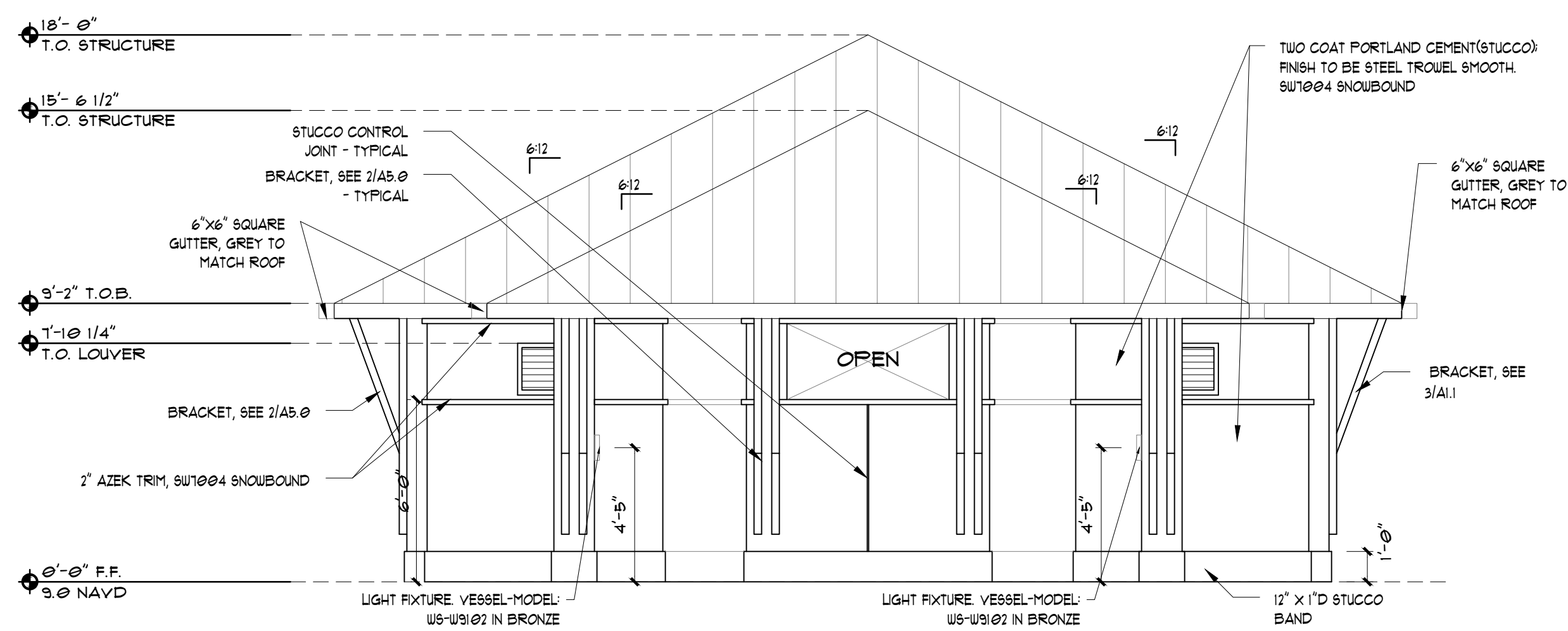
| | | | | | | | | |
|--|---|---|--|--|-----------------------|------------------|-------------|-----------|
| <p>VETERANS' PARK PREPARED FOR CITY OF MARCO ISLAND 901 PARK AVE. MARCO ISLAND, FLORIDA 34145 CITY OF MARCO ISLAND</p> | <p>SHEET DESCRIPTION FLOOR PLAN</p> | <p>KHA PROJECT 19203</p> | <p>Kimley»»Horn</p> | <p>MAK 975 6TH AVENUE SOUTH MARCO FL 33981-9702 PHONE: (239) 970-7922 FAX: (239) 449-0523 WWW.MHKAP.COM</p> | <p>DATE</p> | <p>REVISIONS</p> | <p>DATE</p> | <p>BY</p> |
| | | <p>DATE 02/03/2021</p> | | | | | | |
| | | <p>SCALE AS SHOWN</p> | <p>STATE OF FLORIDA REGISTERED ARCHITECT 180000071</p> | <p>CONSULTANT</p> | | | | |
| | | <p>DESIGNED BY: MHP DRAWN BY: JAK</p> | | | <p>CHECKED BY: MM</p> | | | |
| | | <p>17-03-59 -05'00"</p> | | | | | | |
| | | <p>Matthew Kragh 2021.02.19</p> | | | | | | |

Matthew Kragh
2021.02.19
17:03:59 -05'00

GENERAL ELEVATION NOTES

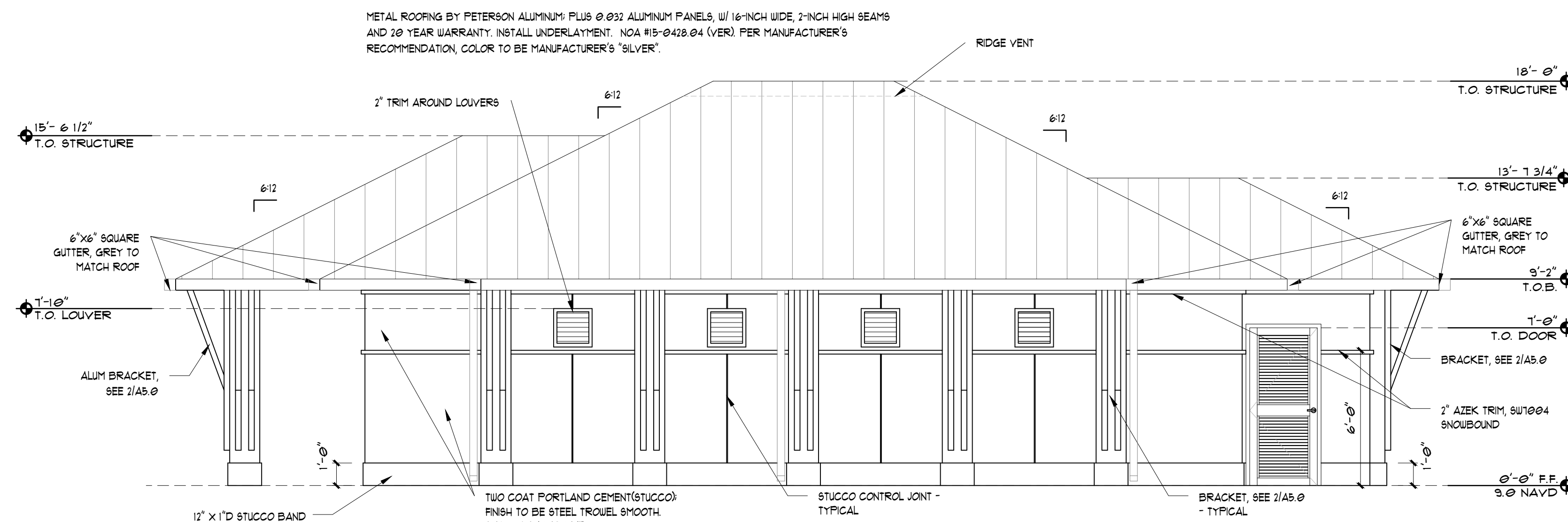
1. NOT USED

Reviewed
KDeFedericis
02/24/2021 2:20:54 PM

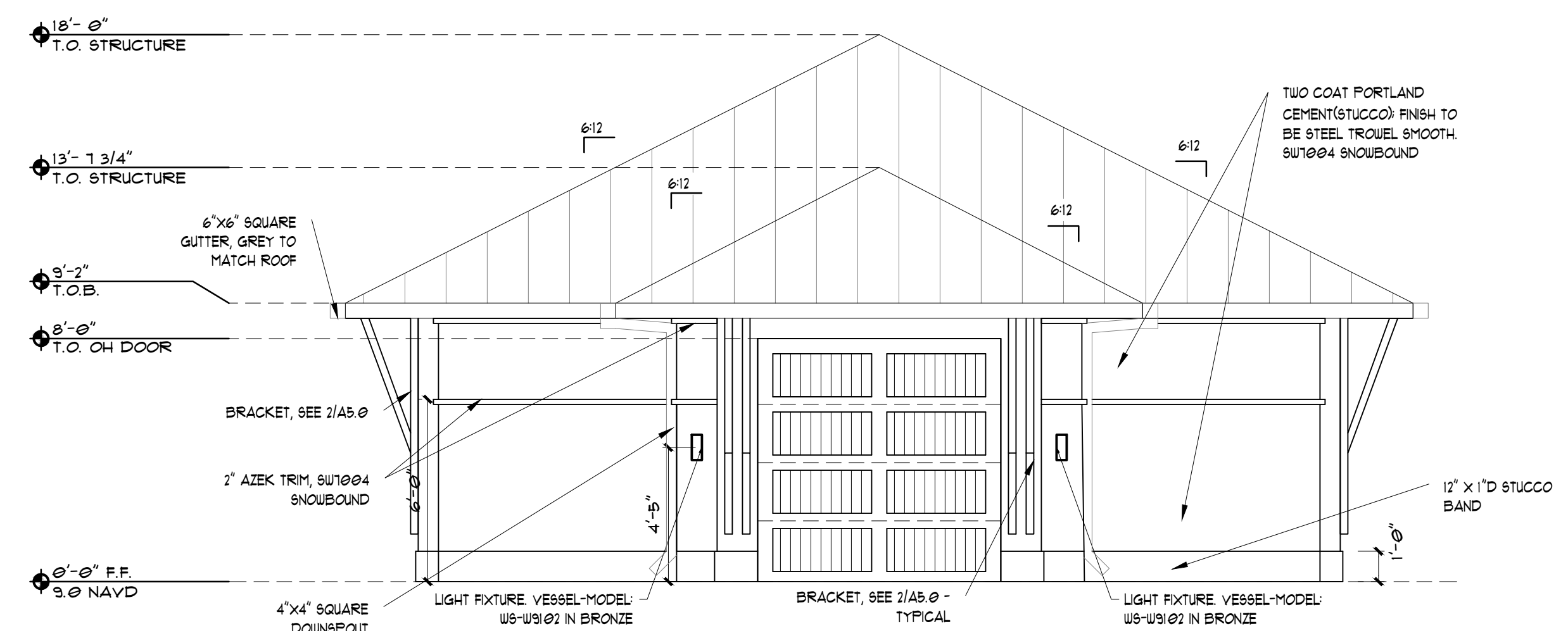


REAR BUILDING ELEVATION

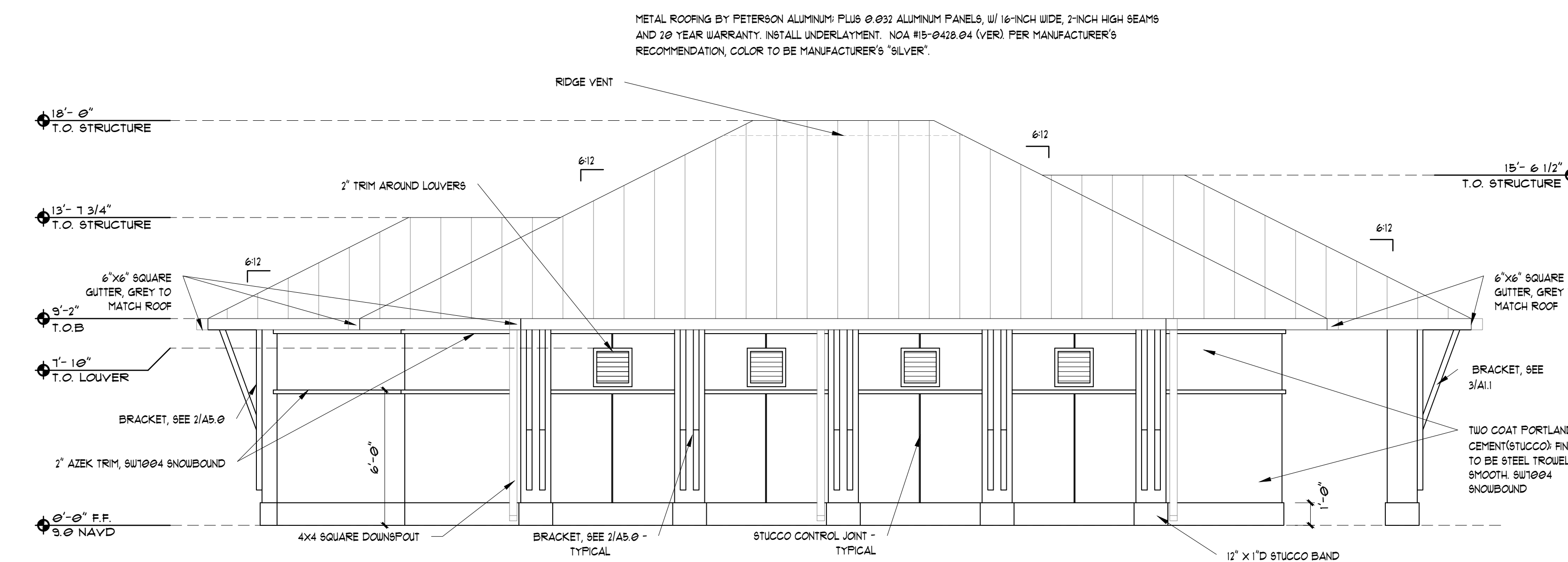
SCALE: 1/4" = 1'-0"



SIDE BUILDING ELEVATION
SCALE: 1/4" = 1'-0"



FRONT BUILDING ELEVATION
SCALE: 1/4" = 1'-0"



SIDE BUILDING ELEVATION
SCALE: 1/4" = 1'-0"

EXTERIOR PAINTING BASIS OF DESIGN

PORTLAND CEMENT PLASTER (10PFH OR LOWER)

- PRIMER: PPG PAINTS: 4-803 SERIES PERMA-CRETE ®
- INT-EXT: PPG ACRYLIC MASONRY SURFACE SEALER
- FINISH: PPG PAINTS: 133 SERIES ACRY-SHIELD EXTERIOR
- HOUSE AND TRIM SATIN-ACRYLIC LATEX

PORTLAND CEMENT PLASTER (10-13PFH)

- PRIMER: PPG PAINTS: 4-303 PERMA-CRETE ®
- INTERIOR/EXTERIOR ALKALI RESISTANT PRIMER
- FINISH: PPG PAINTS: 133 SERIES ACRY-SHIELD EXTERIOR
- HOUSE AND TRIM SATIN-ACRYLIC LATEX

- PRIMER: PPG: 90-912 PITT-TECH PLUS ®
- 1ST & 2ND FINISH COAT: PPG: 90-1210 PITT-TECH PLUS ®
WOOD (SEM-GL095)
- PRIMER: PPG: 6001 HYDROSEALER
- 1ST & 2ND FINISH COAT: PPG: 2416 ULTRA-HIDE ® D150

ACCEPTABLE ALTERNATE MANUFACTURERS:

- BENJAMIN MOORE
- SHERWIN-WILLIAMS
- BEHR

FIBER CEMENT BOARD:
 • PRIMER: PPG: 4-603 PERMA-CRETE ®
 • 1ST & 2ND FINISH COAT: PPG: 6-900XI SPEEDHIDE ®
HOLLOW METAL FRAMES & FERROUS METALS (SEMI-GLOSS)

Kimley»»Horn

MHK
ARCHITECTURE
& PLANNING

975 6TH AVENUE SOUTH
NAPLES FLORIDA 34102
PHONE : (239) 919 0786
FAX : (239) 649 0523
WWW.MHKAP.COM

Matthew Kragh
2021.02.19
17:04:42-05'00'

| SHEET DESCRIPTION | |
|---------------------|--|
| BUILDING ELEVATIONS | |

VETERANS' PARK
PREPARED FOR
CITY OF MARCO ISLAND
901 PARK AVE. MARCO ISLAND, FLORIDA 34115

SHEET NUMBER
A6.0