



Genserve, Inc.  
909 NE 27<sup>th</sup> Lane  
Cape Coral FL 33909  
609-369-4071 Phone

April 7, 2026

Marco Island Police Department  
51 Bald Eagle Drive  
Marco Island, FL 34145  
Attn: Joseph Parrilli

Q-122026

Genserve is pleased to provide you with this proposal for the sale, installation and startup of the equipment below:

**Blue Star PD350-1**

- 350kW 208V 3 Phase
- Tier 3
- Diesel 36 hour FDEP fuel tank
- Level 2 Sound Enclosure
- DCP7310 Microprocessor Based Gen-Set Controller
- Warranty: 2 year/2000 hour limited
- Lead time: 32 weeks after submittal approval

**Scope of Work:**

- Prepare engineering drawings
- Permit with Collier County and city.
- Mobilize set up temporary tank.
- Transfer fuel from existing tank to temporary tank.
- Disconnect electric and fuel lines
- Remove existing generator and tank.
- Set new tank and generator on existing slab.
- Tank will be set on neoprene pads and anchored to the slab with (6) 5/8" anchors.
- Dispose of removed generator and tank.
- Transfer and filter fuel from temporary tank to new tank
- Reconnect electric.
- Supply and install new e-stop for new generator.
- Demobilize
- Close out permit with county and city.

**Total for sale, installation and startup: \$234,070.00**

**Notes:**

- Freight/Offloading Included.
- Standby backup power included for duration of the project (one month included).
- Permitting fees paid by Marco Island PD
- Taxes, if applicable, are not included.
- Work to be done on normal business hours.
- No new diesel fuel is included in this quote.
- No new remote annunciator included.

Signature: \_\_\_\_\_ PO Number: \_\_\_\_\_

## TERMS & CONDITIONS

- Quotations are valid for 30 days and limited to the product listed to best meet the intention of the specification.
- Quotations include job-site delivery as shown on quote
- Quotations include startup as required by manufacturer unless otherwise noted.
- Payment is due and payable as per agreed terms and/or prior to startup, whichever comes first. Startup services "WILL NOT" be provided for customers with delinquent accounts.
- No retainage for startup will be allowed.
- COD orders must be paid in full prior to shipment.
- All products remain the property of GenServe Inc. until paid in full.
- GenServe is not responsible for the installation of any equipment or loose parts, such as silencers, remote annunciators, etc.
- Unless listed in the scope of work, permits and code compliance is the responsibility of others.
- Unless listed in the scope of work, installation is by others.
- Fuel: by others.
- If, after the effective date of this agreement, any new or amended tariffs, duties, or import taxes are imposed on materials or components used in the manufacture of the goods covered by this agreement, GenServe shall have the right to adjust the contract price to reflect the increase in costs directly attributable to such new or amended tariffs, duties, or taxes, upon providing written notice to [the Buyer] with supporting documentation.
- Completion and/or delivery dates are estimates only. The dates are subject to change due to circumstances beyond our control and GenServe is not responsible for changes in factory lead times.
- Custom manufactured products may not be returned.
- Purchase orders may not be cancelled without prior written consent from GenServe. Cancellation fees may apply.
- A 2.5% processing fee will apply to all credit card payments.

# BLUE STAR

## Power Systems

Diesel Product Line

208-600 Volt

PD350-01

60 Hz / 1800 RPM

350 kWe

Standby

### Ratings

	208V	240V	480V	600V
<b>Phase</b>	3	3	3	3
<b>PF</b>	0.8	0.8	0.8	0.8
<b>Hz</b>	60	60	60	60
<b>Generator Model</b>	S4L1D-F41	S4L1D-F41	S4L1D-E41	S4L1S-E4
<b>Connection</b>	12 LEAD WYE	12 LEAD DELTA	12 LEAD WYE	4 LEAD WYE
<b>kWe</b>	350	350	350	350
<b>AMPS</b>	1216	1054	527	421
<b>Temp Rise</b>	125°C / 40°C	125°C / 40°C	125°C / 40°C	125°C / 40°C

### Standard Equipment

#### Engine

- Radiator Cooled Unit Mounted (50°C)
- Radiator Duct Flange (OPU Only)
- Blower Fan & Fan Drive
- Starter & Alternator
- Oil Pump & Filter
- Oil Drain Extension w/Valve
- Governor - Electronic Isochronous
- 24V Battery System & Cables
- Air Cleaner (Dry Single Stage)
- Critical Grade Silencer Mounted
- Flexible Fuel Connector
- EPA Certified Tier 3

#### Generator

- Brushless Single Bearing
- Automatic Voltage Regulator
- ± 0.50% Voltage Regulation
- 4 Pole, Rotating Field
- 125°C Standby Temperature Rise
- 100% of Rated Load - One Step
- 5% Maximum Harmonic Content
- NEMA MG 1, IEEE and ANSI Standards Compliance for Temperature Rise

#### Additional

- Single Source Supplier
- UL 2200 & cUL Listed
- CSA Certified
- Seismic Certified to IBC 2021
- NFPA 110 / CSA C282 Compliant
- Microprocessor Based Digital Control Panel Mounted in NEMA 12 Enclosure
- Base - Formed Steel
- Main Line Circuit Breaker Mounted & Wired
- Battery Charger 24V 5 Amp
- Jacket Water Heater -20°F 4000W 240V w/Isolation Valves
- Vibration Isolation Mounts
- 2 Year / 2000 Hour Standby Warranty
- Standard Colors - White / Gray

### Application Data

#### Engine

Manufacturer:	Perkins	Displacement - Cu. In. (lit):	763 (12.5)
Model:	2206D-E13TAG2	Bore - in. (cm) x Stroke - in. (cm):	5.12 (13.0) x 6.18 (15.7)
Type:	4-Cycle	Compression Ratio:	16.3:1
Aspiration:	Turbo Charged, CAC	Rated RPM:	1800
Cylinder Arrangement:	6 Cylinder Inline	Max HP Stby (kWm):	545 (407)

#### Exhaust System

#### Standby

Gas Temp. (Stack): °F (°C)	1,256 (680)
Gas Volume at Stack Temp: CFM (m³/min)	2,707 (76.6)
Maximum Allowable Exhaust Restriction: in. H <sub>2</sub> O (kPa)	40.0 (10.00)

#### Cooling System

Ambient Capacity of Radiator: °F (°C)	122 (50.0)
Maximum Allowable Static Pressure on Rad. Exhaust: in. H <sub>2</sub> O (kPa)	0.50 (0.12)
Water Pump Flow Rate: GPM (lit/min)	106 (402)
Heat Rejection to Coolant: BTUM (kW)	8,440 (148)
Heat Rejection to CAC: BTUM (kW)	3,394 (59.4)
Heat Radiated to Ambient: BTUM (kW)	7,104 (124)

#### Air Requirements

Aspirating: CFM (m³/min)	940 (26.6)
Air Flow Required for Rad. Cooled Unit: CFM (m³/min)	27,845 (788)
Air Flow Required for Heat Exchanger/Rem. Rad. CFM (m³/min)	Consult Factory For Remote Cooled Applications

#### Fuel Consumption

At 100% of Power Rating: gal/hr (lit/hr)	24.0 (90.8)
At 75% of Power Rating: gal/hr (lit/hr)	18.9 (71.6)
At 50% of Power Rating: gal/hr (lit/hr)	14.0 (52.9)

#### Fluids Capacity

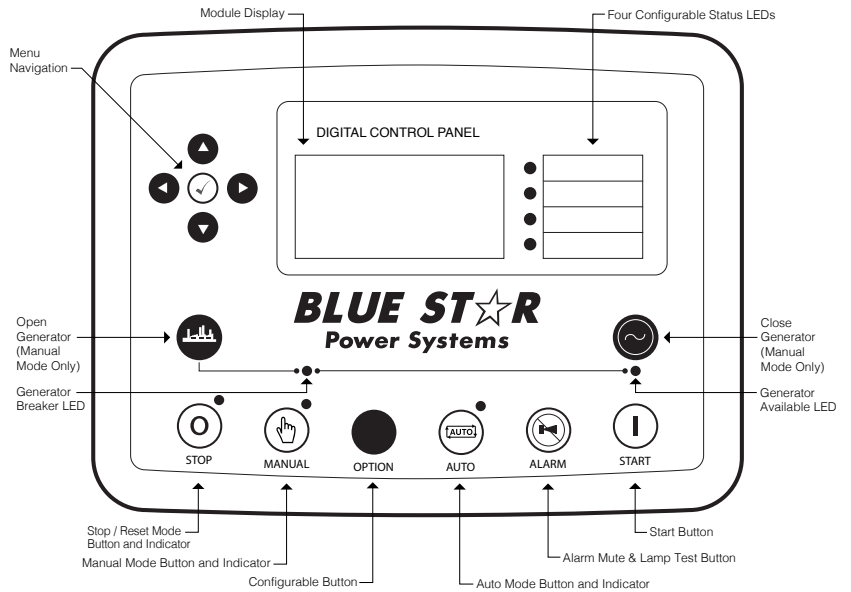
Total Oil System: gal (lit)	10.6 (40.0)
Engine Jacket Water Capacity: gal (lit)	7.48 (28.3)
System Coolant Capacity: gal (lit)	13.6 (51.4)

Deration Factors: Rated Power is available up to 3281ft (1000m) at ambient temperatures to 104°F (40°C). Consult factory for site conditions above these parameters.

## DCP7310 Control Panel

### Standard Features

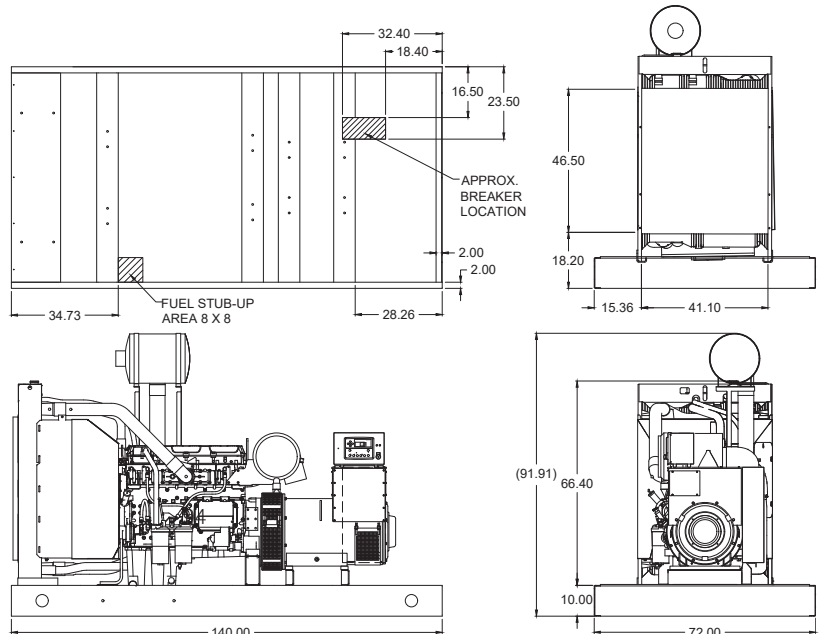
- Digital Metering
- Engine Parameters
- Generator Protection Functions
- Engine Protection
- CAN Bus (J1939) ECU Communications
- Windows-Based Software
- Multilingual Capability
- Remote Communications to DSE2548 Remote Annunciator
- 8 Programmable Contact Inputs
- 10 Contact Outputs
- RS485 Communicator Interface
- cULus Listed, CE Approved
- Event Recording
- IP 65 rating (with supplied gasket) offers increased resistance to water ingress
- NFPA 110 Level 1 Compatible



## Weights / Dimensions / Sound Data

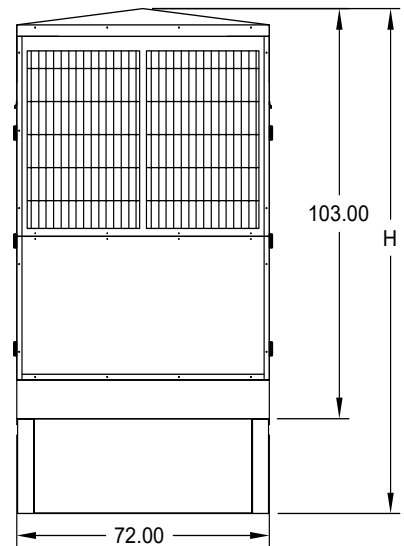
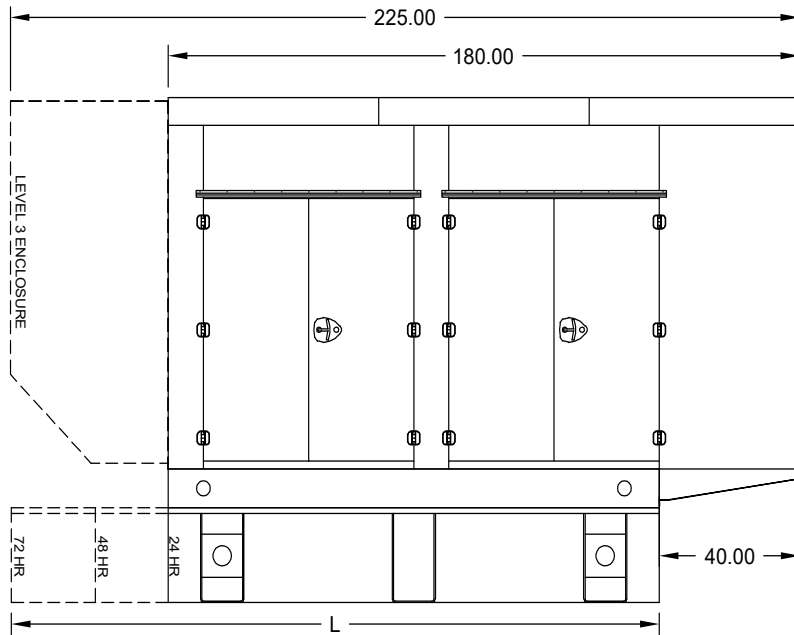
	L x W x H	Weight lbs
<b>OPU</b>	140 x 72 x 92 in	7,875
<b>Level 1</b>	180 x 72 x 103 in	9,550
<b>Level 2</b>	180 x 72 x 103 in	9,625
<b>Level 3</b>	225 x 72 x 103 in	10,050

Please allow 6-12 inches for height of exhaust stack.



	No Load	Full Load
<b>OPU</b>	87 dBA	89 dBA
<b>Level 1</b>	83 dBA	85 dBA
<b>Level 2</b>	78 dBA	80 dBA
<b>Level 3</b>	70 dBA	73 dBA

## Enclosures & Fuel Tanks



- All enclosure models are 200 MPH wind rating certified in accordance with IBC2021 and ASCE/SEI 7-16 standards.
- Level 2 & 3 enclosures include sound attenuation foam
- Level 3 enclosure includes frontal sound & exhaust hood.
- Enclosure height does not include exhaust stack.

	24 Hour 710 Gallon	48 Hour 1420 Gallon	72 Hour 2130 Gallon
<b>L</b>	140.00	180.00	250.00
<b>H</b>	127.00	139.00	139.00

### Notes

- All specification sheet dimensions are represented in inches.
- All drawings based on standard 480 volt standby generator. Lengths may vary with other voltages. All drawings and dimensions subject to change without notice.
- All enclosures and fuel tanks are based on the standard unit configuration. Any requested deviation can change dimensions.
- Sound data is measured at 23 feet (7 meters) in accordance with ISO 8528-10.
- All materials and specifications subject to change without notice.

### Blue Star Power Systems

2250 Carlson Drive  
North Mankato, Minnesota 56003  
Phone + 1 507 345 1776  
bluestarps.com  
quote.bluestarps.com  
sales@bluestarps.com

**/// A DEUTZ COMPANY ///**