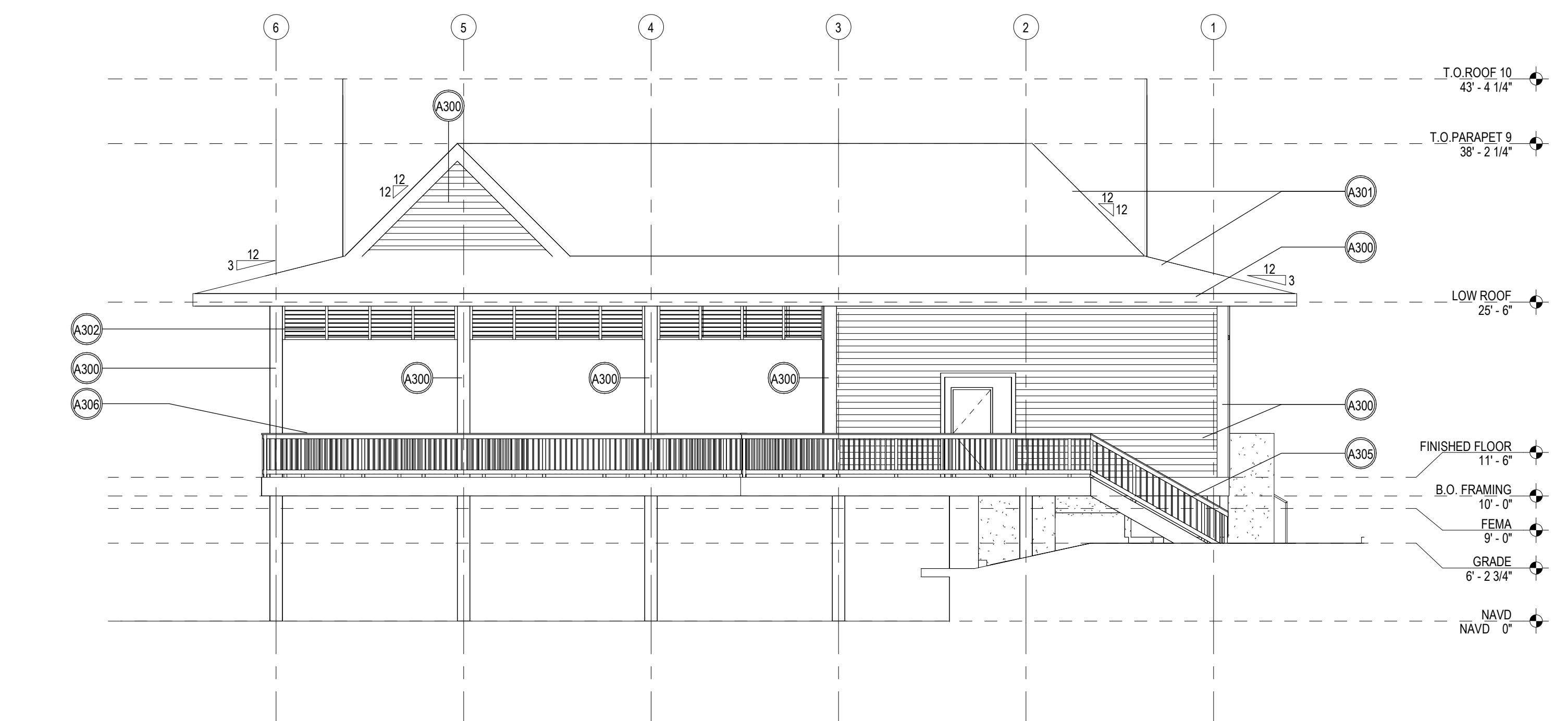
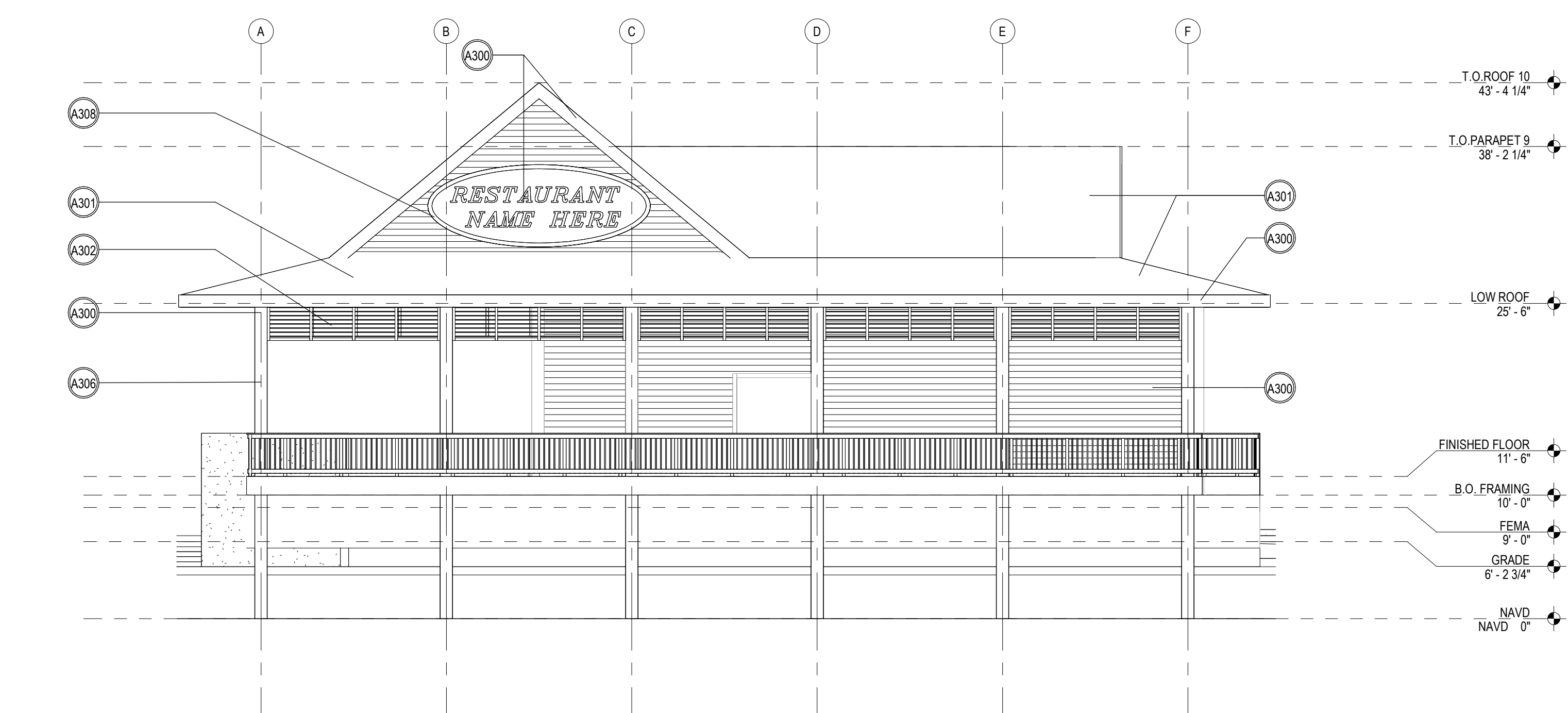


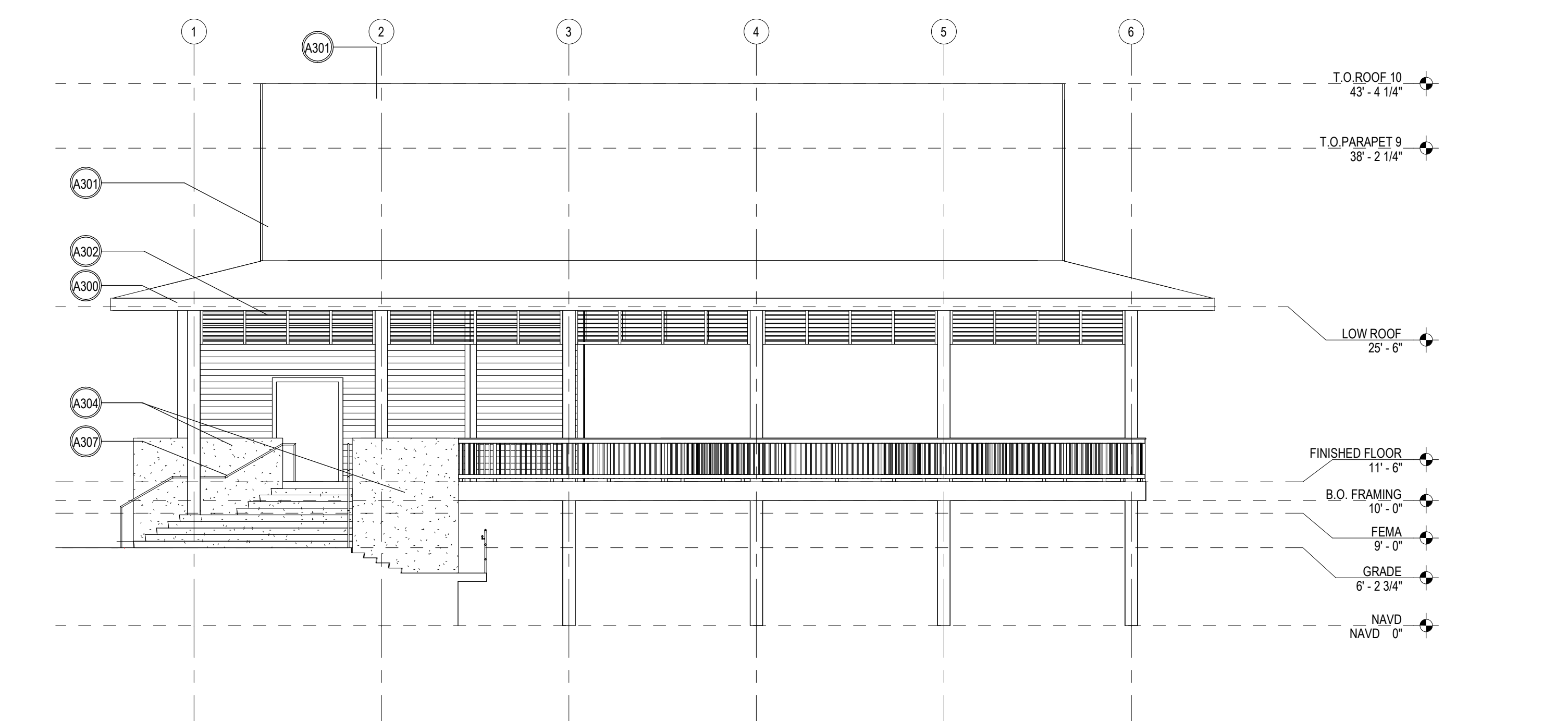
1 WEST ELEVATION
1/8" = 1'-0"



2 NORTH ELEVATION
1/8" = 1'-0"



4 EAST ELEVATION
1/8" = 1'-0"



3 SOUTH ELEVATION
1/8" = 1'-0"

ELEVATIONS - SPECIFIC NOTES	
Key Value	Keynote Text
A300	FIBER CEMENT SIDING & TRIM PAINTED
A301	STANDING SEAM METAL ROOF
A302	PRE-FINISHED ALUMINUM LOUVERS
A303	STOREFRONT SYSTEM
A304	PAINTED STUCCO
A305	COMPOSITE DECK OVER CONCRETE STAIR
A306	PRE-FINISHED ALUMINUM RAILING
A307	ALUMINUM HANDRAIL

PRELIMINARY NOT FOR CONSTRUCTION

ROSE MARINA RESTAURANT

ROSE MARINA
951 BALD EAGLE DRIVE, MARCO ISLAND, FL 34145

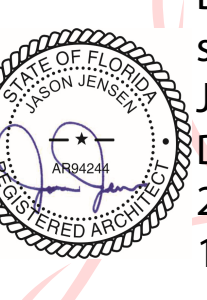
Project number
24003

SDP APPLICATION 05/19/2025

REV	DESCRIPTION	DATE

DESIGN - EXTERIOR ELEVATIONS

DS2.1



Digitally signed by Jason Jensen
Date: 2025.05.19 14:44:08 -04'00'

WJ Architects
AR94244

(727) 822-5566
www.wjac.com
©WarrenJensen Architects, Inc.

THIS PROJECT IS THE PROPERTY OF WJ ARCHITECTS AND IS NOT TO BE REPRODUCED OR TRANSMITTED IN ANY FORM OR BY ANY MEANS, ELECTRONIC OR MECHANICAL, INCLUDING PHOTOCOPYING, RECORDING, OR BY ANY INFORMATION STORAGE AND RETRIEVAL SYSTEM, WITHOUT THE WRITTEN PERMISSION OF WJ ARCHITECTS. ANY REPRODUCTION OR TRANSMISSION OF THIS DOCUMENT WITHOUT THE WRITTEN PERMISSION OF WJ ARCHITECTS IS STRICTLY PROHIBITED. THE ARCHITECT'S LIABILITY IS LIMITED TO THE DESIGN AND CONSTRUCTION SERVICES PROVIDED BY THE ARCHITECT. THE ARCHITECT IS NOT RESPONSIBLE FOR ANY OTHER SERVICES PROVIDED BY OTHER PROFESSIONALS. THE ARCHITECT'S LIABILITY IS LIMITED TO THE DESIGN AND CONSTRUCTION SERVICES PROVIDED BY THE ARCHITECT. THE ARCHITECT IS NOT RESPONSIBLE FOR ANY OTHER SERVICES PROVIDED BY OTHER PROFESSIONALS.