



Product Approval  
USER: Public User

[Product Approval Menu](#) > [Product or Application Search](#) > [Application List](#) > **Application Detail**

FL #	FL21372-R1
Application Type	Affirmation
Code Version	2017
Application Status	Approved
Comments	
Archived	<input type="checkbox"/>
Product Manufacturer	Raynor Garage Doors
Address/Phone/Email	1101 East River Road Dixon, IL 61021 (815) 285-7286 garyw@raynor.com
Authorized Signature	Gary Wedekind garyw@raynor.com
Technical Representative	Gary Wedekind
Address/Phone/Email	1101 E River Road Dixon, IL 61021 garw@raynor.com
Quality Assurance Representative	Nathan Stralow
Address/Phone/Email	1101 East River Road Dixon, IL 61021 (815) 285-7443 nstralow@raynor.com
Category	Exterior Doors
Subcategory	Sectional Exterior Door Assemblies
Compliance Method	Evaluation Report from a Florida Registered Architect or a Licensed Florida Professional Engineer <input type="checkbox"/> Evaluation Report - Hardcopy Received
Florida Engineer or Architect Name who developed the Evaluation Report	John E. Scates
Florida License	PE-51737
Quality Assurance Entity	
Quality Assurance Contract Expiration Date	07/31/2020

Validated By

Gordon Thomas, P.E.

Validation Checklist - Hardcopy Received

Certificate of Independence

[FL21372 R1 COI Cert of Ind Scates 2016 s.pdf](#)

Referenced Standard and Year (of Standard)

<u>Standard</u>	<u>Year</u>
TAS 201	1994
TAS 202	1994
TAS 203	1994

Equivalence of Product Standards Certified By

Sections from the Code

I affirm that there are no changes in the new Florida Building Code which affect my product(s) and my product(s) are in compliance with the new Florida Building Code.

Documentation from approved Evaluation or Validation Entity

Yes  No  N/A

[FL21372 R1 COC FL 21372 Affirm for FBC 6th 2017s.pdf](#)

Product Approval Method

Method 1 Option D

Date Submitted

09/19/2017

Date Validated

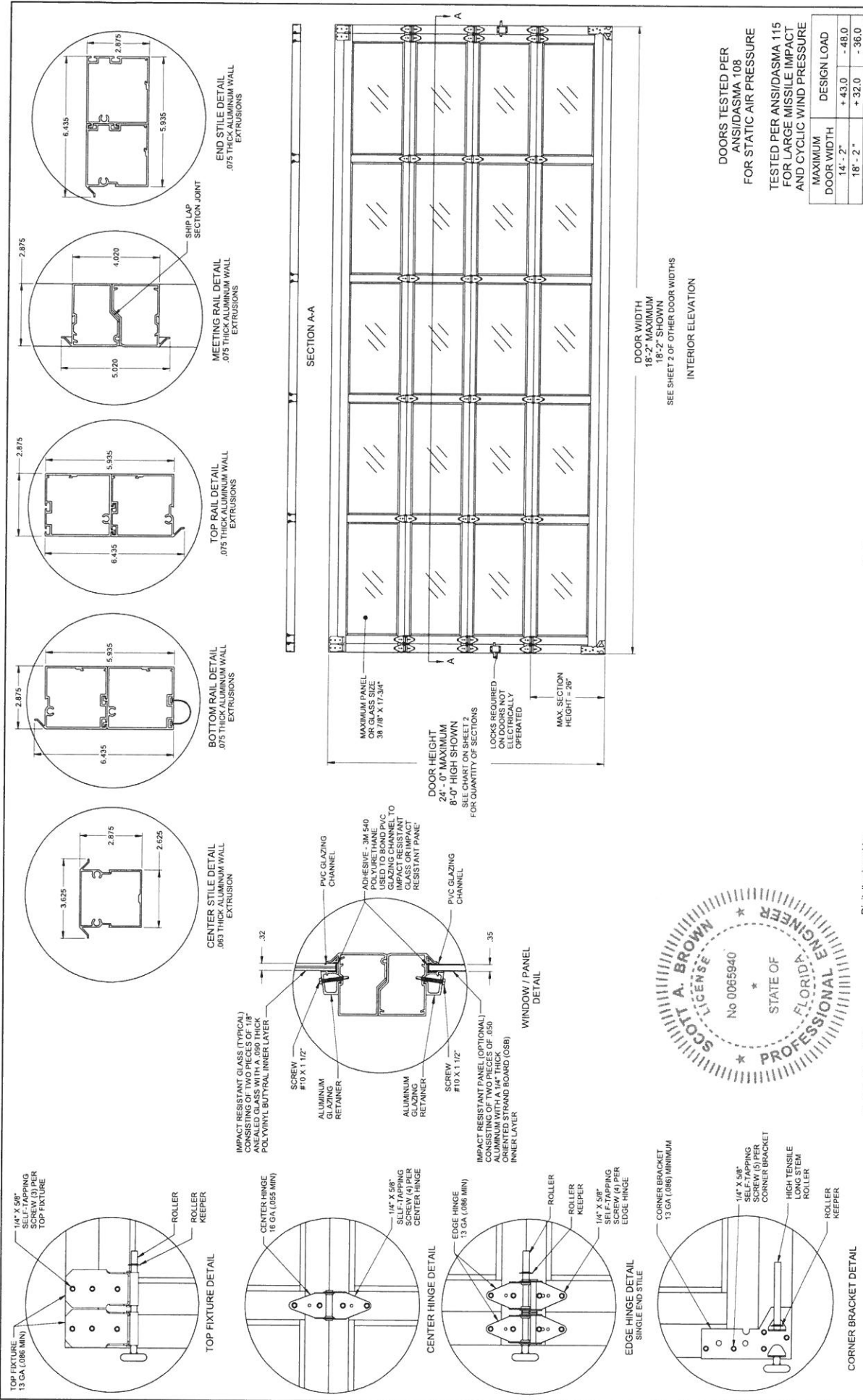
09/19/2017

Date Pending FBC Approval

Date Approved

09/21/2017

FL #	Model, Number or Name	Description
21372.1	AV300	2-7/8" thick Aluminum Rail and Stile Full View Sectional Door with Impact Resistant Windows
<b>Limits of Use</b> Approved for use in HVHZ: Yes Approved for use outside HVHZ: Yes Impact Resistant: Yes Design Pressure: +42.0/-52.0 Other: Maximum door width = 16' -2"		<b>Installation Instructions</b> <a href="#">FL21372 R1 II P-3338-A s.pdf</a> Verified By: John E. Scates 51737 Created by Independent Third Party: Yes <b>Evaluation Reports</b> <a href="#">FL21372 R1 AE EvaluationReport AV300 r0 s.pdf</a> Created by Independent Third Party: Yes



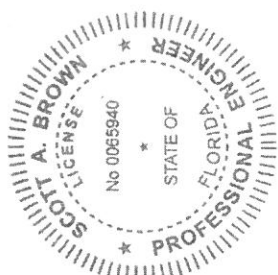
DOORS TESTED PER  
ANSI/DASMA 108  
FOR STATIC AIR PRESSURE  
TESTED PER ANSI/DASMA 115  
FOR LARGE MISSILE IMPACT  
AND CYCLIC WIND PRESSURE

MAXIMUM DOOR WIDTH	DESIGN LOAD
14' - 2"	+ 43.0 - -48.0
18' - 2"	+ 32.0 - -36.0

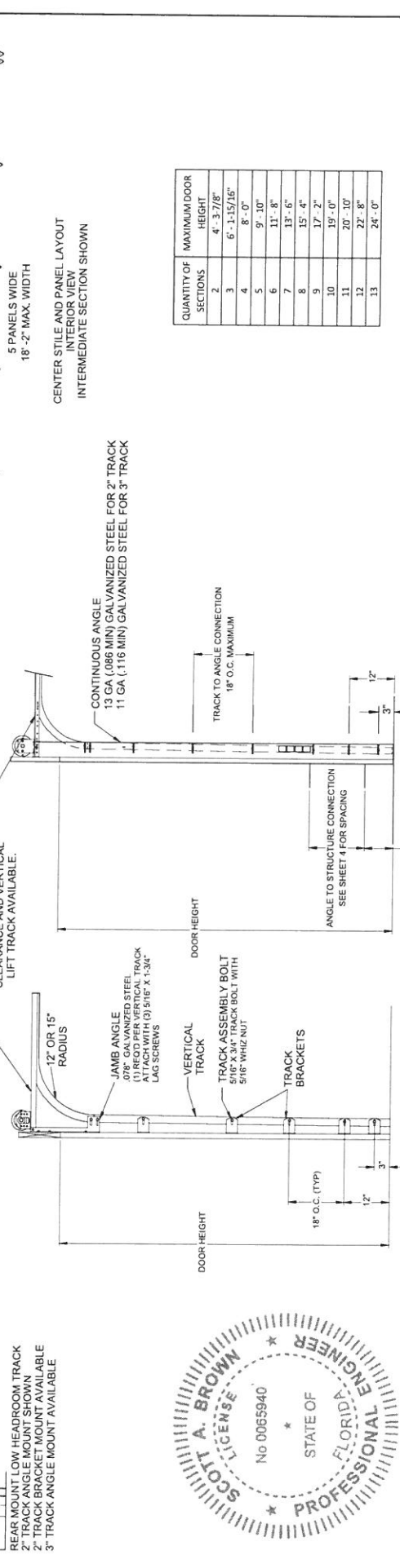
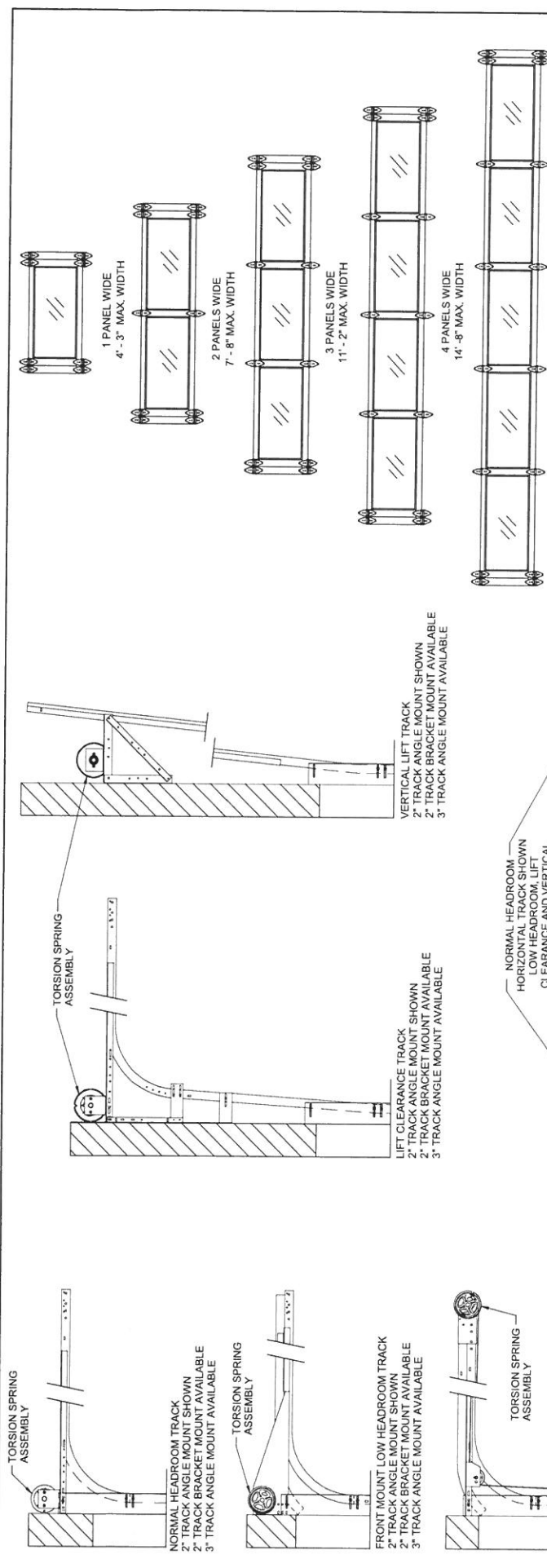
REV	DESCRIPTION	DATE	BY	CHK
C	ISSUE REVISIONS			
B	ADDED 1/2" WIDTH	08-11-14	SCOTT A. BROWN	PE
A	RELEASED FOR PRODUCTION	06-03-13	SCOTT A. BROWN	PE

NAME	SCOTT A. BROWN
DESIGN NO.	0000313
DATE	06-03-13
REV	1 OF 4

Digitally signed by  
Scott A. Brown, PE  
Date: 2017-10-11  
16:30:56



Scott A. Brown P.E.  
F.P.E. #65940  
698 Timber Creek Road  
Dixon, Illinois 61021



CENTER STILE AND PANEL LAYOUT  
INTERIOR VIEW  
INTERMEDIATE SECTION SHOWN

QUANTITY OF SECTIONS	MAXIMUM DOOR HEIGHT
2	4' - 3 7/8"
3	6' - 1 15/16"
4	8' - 0"
5	9' - 10"
6	11' - 8"
7	13' - 6"
8	15' - 4"
9	17' - 2"
10	19' - 0"
11	20' - 10"
12	22' - 8"
13	24' - 0"

Digitally signed  
by Scott A.  
Brown, PE  
Date: 2017-10-11  
16:34:49

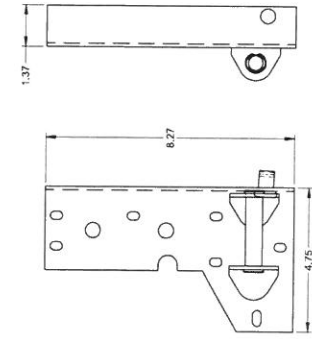
Spec. Wind Load  
AV300

RAYMOND  
GALVANIZED TRACKS  
MANUFACTURING  
CORPORATION

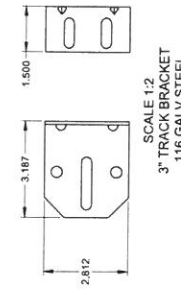
NO. P-3330

SHEET  
2 OF 4

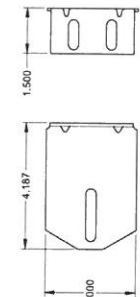
REV.  
C



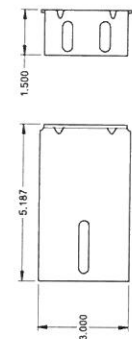
SCALE 1:2  
CORNER BRACKET(.086 MIN)  
GALV. STEEL



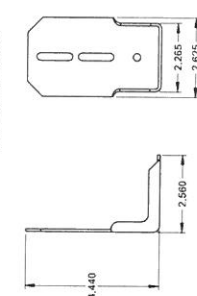
SCALE 1:2  
3" TRACK BRACKET  
.116 GALV STEEL



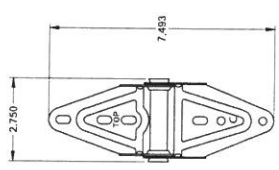
SCALE 1:2  
4" TRACK BRACKET  
.116 GALV STEEL



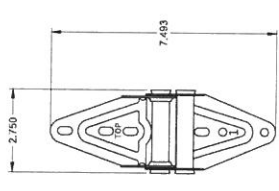
SCALE 1:2  
5" TRACK BRACKET  
.116 GALV. STEEL



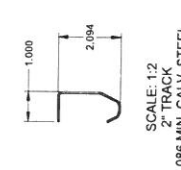
SCALE 1:2  
ROLLER CARRIER  
TOP FIXTURE  
.086 GALV. STEEL



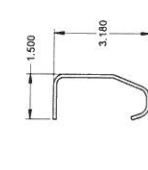
SCALE 1:2  
CENTER HINGE  
.045 GALV. STEEL



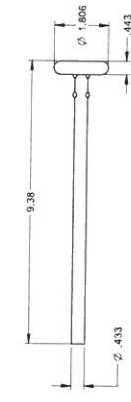
SCALE 1:2  
EDGE HINGE  
.086 GALV STEEL



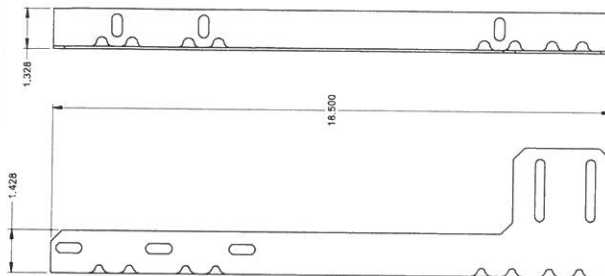
SCALE 1:2  
2" TRACK  
.086 MIN. GALV. STEEL



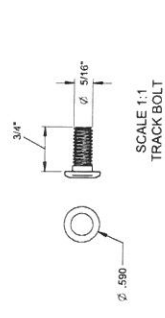
SCALE 1:2  
3" TRACK (OPTIONAL)  
.105 GALV. STEEL



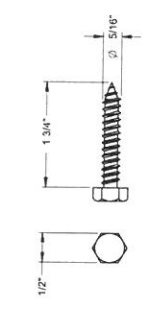
SCALE 1:2  
TRACK ROLLER  
80 KSI TENSILE STEEL SHAFT



SCALE 1:2  
JAMB ANGLE  
.078 GALV. STEEL

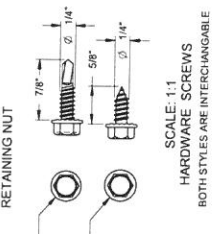


SCALE 1:1  
TRACK BOLT

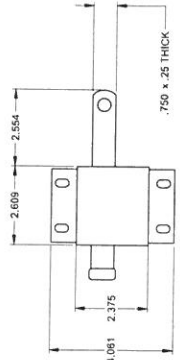


SCALE 1:1  
RETAINING NUT

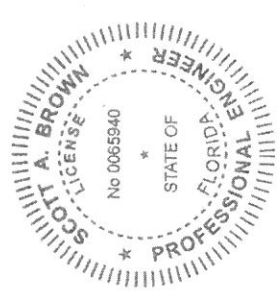
SCALE 1:1  
HEX HEAD LAG SCREW



SCALE 1:1  
HARDWARE SCREWS  
BOTH STYLES ARE INTERCHANGEABLE



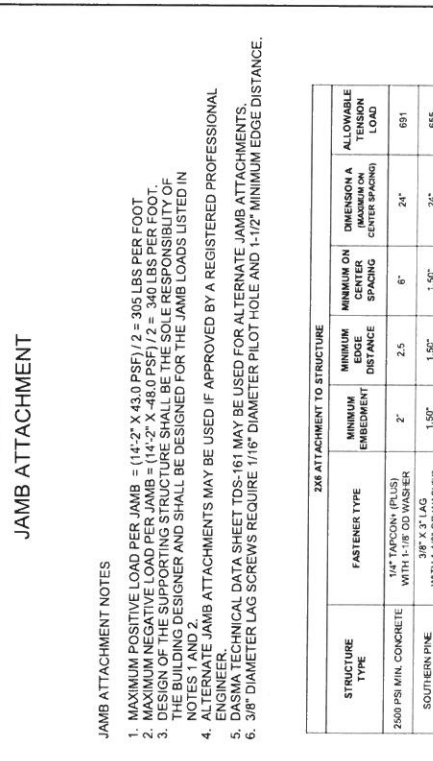
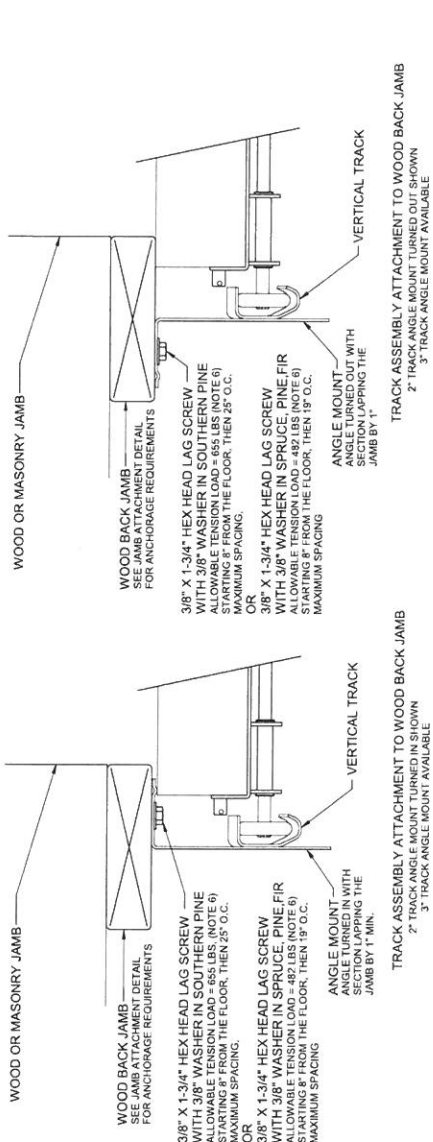
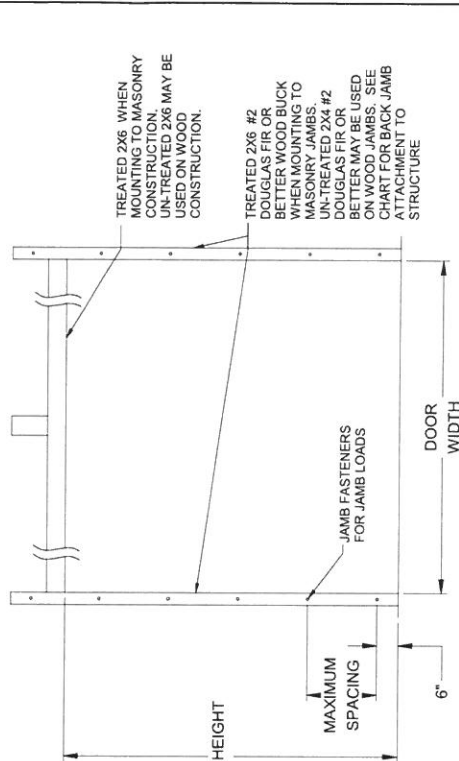
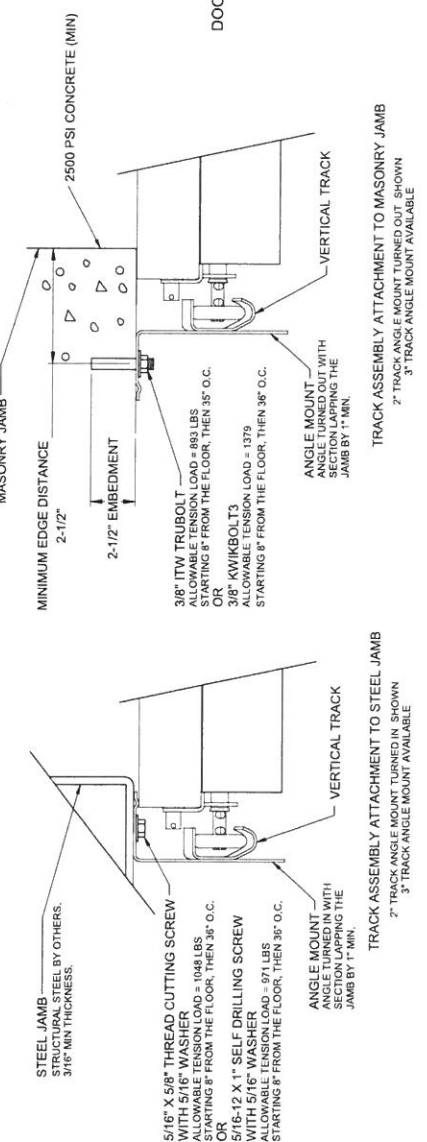
SCALE 1:  
SLIDE LOCK WHEN REQUIRED  
CASE .086 GALV. STEEL



Digitally signed by  
Scott A. Brown, PE  
Date: 2017-10-11  
16:35:58

Scott A. Brown P.E.  
P.E.#03840  
698 Timber Creek Road  
Dixon Illinois 61021

SCALE NAME	THE	SPEC. WIND LOAD
DESIGNED BY	RAYMOND	AV280
CHECKED BY	RAYMOND	
DATE	NOV 2013	
NO.	P-3330	SHEET
		3 OF 4

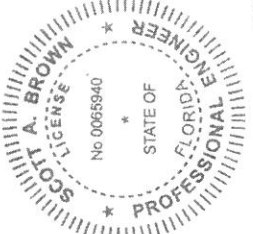


**JAMB ATTACHMENT NOTES**

1. MAXIMUM POSITIVE LOAD PER JAMB =  $(14'-2" \times 43.0 \text{ PSF}) / 2 = 305 \text{ LBS PER FOOT}$
2. MAXIMUM POSITIVE LOAD PER JAMB =  $(14'-2" \times 48.0 \text{ PSF}) / 2 = 340 \text{ LBS PER FOOT}$ .
3. DESIGN OF THE SUPPORTING STRUCTURE SHALL BE THE SOLE RESPONSIBILITY OF THE BUILDING DESIGNER AND SHALL BE DESIGNED FOR THE JAMB LOADS LISTED IN NOTES 1 AND 2.
4. ALTERNATE JAMB ATTACHMENTS MAY BE USED IF APPROVED BY A REGISTERED PROFESSIONAL ENGINEER.
5. DASHA TECHNICAL DATA SHEET TDS-161 MAY BE USED FOR ALTERNATE JAMB ATTACHMENTS.
6. 3/8" DIAMETER LAG SCREWS REQUIRE 1/16" DIAMETER PILOT HOLE AND 1-1/2" MINIMUM EDGE DISTANCE.

**2X6 ATTACHMENT TO STRUCTURE**

STRUCTURE TYPE	FASTENER TYPE	MINIMUM EMBEDMENT	MINIMUM EDGE DISTANCE	MINIMUM ON CENTER SPACING	DIMENSION A (MAXIMUM ON CENTER SPACING)	ALLOWABLE TENSION LOAD
2500 PSI MIN. CONCRETE	1/4" TAPCON (PLUS) WITH 1-1/8" O.D. WASHER	2"	2.5	6"	24"	691
SOUTHERN PINE	3/8" X 3" LAG WITH 3/8" X 1/4" WASHER	1.50"	1.50"	1.50"	24"	655
SPRUCE PINE FIR	3/8" X 3" LAG WITH 1-1/8" O.D. WASHER	1.50"	1.50"	1.50"	19"	482



Scott A. Brown P.E.  
 F.P.E. #65940  
 698 Timber Creek Road  
 Dixon, Illinois 61021

Digitally signed  
 by Scott A Brown,  
 PE  
 Date: 2017-10-11  
 16:37:36

NAME: SCOTT A. BROWN  
 COMPANY: G. MCDERMID  
 LICENSE NO.: 0065940  
 EXPIRES: 10/31/17  
 TITLE: PROFESSIONAL ENGINEER  
 STATE: ILLINOIS  
 REG. NO.: 000187

SPEC. WIND LOAD  
 AV900  
 NO. P-3330  
 SHEET  
 4 OF 4  
 C



# AlumaView<sup>®</sup> AV300

A full 3" thick, the new AV300 is the sturdiest door in the AlumaView family. The increased thickness adds increased strength and durability. With the incorporation of the U-bar trussing inside the rails, there are no obstructions to your view. The AV300 is the clear choice for auto dealerships, car washes, corrosive environments, police, fire and ambulance stations, quick lubes, repair facilities, restaurants, marinas, sports facilities and buildings with large opening sizes.



#### Integral U-Bar

The first 3" thick aluminum door in the industry provides even greater strength and durability. With an integral U-bar the truss is contained within the rail (as required), providing a clean and unobstructed view.



#### Air and Water Infiltration Seals

Our EPDM bulb seal in between each section locks out wind and water from the interior of the building.



#### Certified Wind Load

The AV300 is wind load certified, Florida approved (FL15212) and impact rated up to 18'2" wide, +43/-48 Design PSF.



#### Large Sizes

Get the size you need with widths and heights available to 24'. Top and bottom rail 6½" high.



## Optional Upgrades

### Finishes:

1. *Anodized Aluminum:*  
Standard: Clear  
Optional: Champagne, Light, Medium, Dark or Extra Dark Bronze, or Black.
2. *Optional 187 ArmorBrite™ Colors:* Complete the building's "wow" factor by selecting the perfect offsetting color, including finishes that match anodized colors without the long lead times of anodizing.

### Windows:

3. *Glass:* Available in impact resistant, tempered, tinted, double-pane, insulated, acrylic, or polycarbonate in a variety of thicknesses.
4. *Solid Aluminum Panel:* Ideal for busy environments, prevents glass breakage at critical heights, protecting your investment.

### Hardware:

5. *Optional EnduraCote™ Track Hardware:* Powder coated hardware and nylon rollers provides a finished, clean look to your door.
6. *Optional High-Cycle Springs:* Providing long, reliable operation in high traffic areas.
7. *Customized Track:* Available to fit special clearances, inclines or contours.
8. *Locks:* Raynor locks give you true security, with the strongest spring loaded, positive engaging lock in the market. The extra thick, "jiggle-proof" lock bar is also equipped with an all-weather handle cover.
9. *Carbon Monoxide Vents:* Channels fumes outside when door is closed.
10. *Weather Seals:* Flexible vinyl flap header seal and EPDM rubber jamb seals are available to reduce air infiltration by sealing the door when closed.

## Standard Limited Warranty\*

**Sections:** 5-years

**Hardware, Track and Springs:** 1-year

\*Limited Warranty: Visit [www.raynor.com/products](http://www.raynor.com/products) for complete Limited Warranty details.