

Statistics

| Description  | Symbol | Avg    | Max     | Min    | Max/Min | Avg/Min |
|--------------|--------|--------|---------|--------|---------|---------|
| Calc Zone #2 | +      | 5.5 fc | 10.5 fc | 2.5 fc | 4.2:1   | 2.2:1   |
| Calc Zone #3 | +      | 2.1 fc | 5.5 fc  | 0.4 fc | 13.8:1  | 5.3:1   |
| Calc Zone #4 | +      | 5.6 fc | 10.6 fc | 2.6 fc | 4.1:1   | 2.2:1   |
| Calc Zone #1 | +      | 3.3 fc | 11.7 fc | 0.1 fc | 117.0:1 | 33.0:1  |

NOTES:  
EXISTING LIGHT  
CONTRIBUTION FROM THE  
CITY OF MARCO ISLAND  
LIGHT IS APPROXIMATED

ADDITIONAL LIGHT  
CONTRIBUTION FROM  
OFF-SITE SOURCES AND  
LANDSCAPE LIGHTING ARE  
NOT FACTORED INTO  
THESE CALCULATIONS

Schedule

| Symbol | Label | Image | QTY | Manufacturer                | Catalog   | Description   | Number Lamps | Lamp Output | LLF | Input Power | Polar Plot       |
|--------|-------|-------|-----|-----------------------------|---|---|--------------|-------------|-----|-------------|------------------|
|        | A     |       | 28  | ARCHITECTURAL AREA LIGHTING | KB6-Y5-1040   | KICK BOLLARD. ALUMINUM HOUSING. LED ARRAY CONSIST OF HEATSINK, LEDS AND OPTICS. CLEAR LENS.   | 1            | 1189        | 1   | 14          | <br>Max: 510cd   |
|        | B     |       | 1   | CREE, INC.                  | ARE-EHO-3M-xx-12-E-UL-xx-1000-40K or BXAKx312E-UX7 (1000mA) | CREE EDGE HIGH OUTPUT, TYPE IIII MEDIUM, 120 LEDS, 1000MA, 4000K  | 120          | 258         | 1   | 427.9       | <br>Max: 15143cd |
|        | C     |       | 10  | VISA LIGHTING               | OW2484  | WALL MOUNT LINEAR FORWARD THROW LENS  | 1            | 1809        | 1   | 26.88       | <br>Max: 738cd   |
|        | D     |       | 8   | KIM LIGHTING                | EL817-9L4K-UNV  | DIE CAST LOW COPPER ALLOY ALUMINUM HOUSING, DIE CAST ALUMINUM LENS FRAME, 9 219B LEDS MOUNTED TO A BRACKET. TEMPERED PRISMATIC GLASS MOUNTED TO LENS FRAME. | 1            | 176         | 1   | 10.5        | <br>Max: 247cd   |
|        | E     |       | 2   | ARCHITECTURAL AREA LIGHTING | UCM2-ANG-36L-260-3K7-3-CL                                   | UNIVERSE COLLECTION MEDIUM 2.0 WITH CLEAR LENS  | 1            | 3404        | 1   | 31.52       | <br>Max: 2746cd  |

Reviewed for code compliance  
M Holden  
02/22/2023 2:26:01 PM

Reviewed for code compliance  
Joshua Ooyman  
02/23/2023 8:46:40 AM

FIXTURE LABEL "A" - LOUVERED BOLLARD

DATE: LOCATION:  
TYPE: PROJECT:  
CATALOG #:

**KB6-LED BOLLARDS**

**DIMENSIONS**

|                |                  |
|----------------|------------------|
| MODEL          | KB6-SMK          |
| Overall Height | 42" / 1067mm     |
| Overall Length | 6" / 152mm       |
| Overall Width  | 6" / 152mm       |
| Window Height  | 19.9" / 50cm     |
| Window Width   | 4" / 10cm        |
| WEIGHT         | 30 lbs. / 13.6kg |

\*Housing and optical distribution are independently field available in 90° increments. Default factory orientations shown above.

DISTRIBUTION OUTPUT\* SHIELDING SIZE

FRONT LEFT BACK RIGHT  
A Street Side B C House Side D

FIXTURE LABEL "D" - STEPLIGHT

**KIMLIGHTING®**

Type:  
Job:  
Fixture Catalog number:

Finish: /

**Specifications**

**Housing:** Die-cast low copper alloy (<0.6% Cu) aluminum with clear anodized finish. Two 1/2" NPT in sides. Housing mounts into concrete, brick, or masonry (non-combustible materials). Internal splice area provided behind lamp plate.

**Lens Frame:** Die-cast aluminum, with silicone gasket, attaches to housing with two captive 10-32 stainless steel, hex socket cap screws.

**Lens:** Tempered prismatic glass with silicone gasket, concealed above lens frame opening.

**Finish:** On Lens Frame only, each luminaire receives a fade and abrasion resistant, electrostatically applied, thermally cured, triglycidal isocyanurate (TGIC) polyester powdercoat finish. Standard colors are Black (BL), Dark Bronze (DB), and Verde Green (GR).

**Optical System:** A total of 3 or 9 LED emitters are configured together as a module. Available in 3000K, 4200K, and 5100K.

**Driver:** Universal Voltage from 120 to 277V with a ±10% tolerance. -40° F. starting temperature. All drivers are Underwriters Laboratories recognized.

FIXTURE LABEL "B" EXISTING CITY OF MARCO ISLAND FIXTURE (NO PRODUCT SHEET SHOWN)

FIXTURE LABEL "C" - COVE LIGHTING COVE LIGHTING TO BE COORDINATED WITH ARCHITECTURAL BAND

**OW2484 PASSAGE™**  
Mullion Mount with Remote Power Supply

**VISA LIGHTING**  
Visalighting.com/products/Passage

Type: Project: Location:



FIXTURE LABEL "E" - STANDARD AT MAIN ENTRY

**UCM2 ARCHITECTURAL AREA/SITE**

**DIMENSIONS**

**ANGLED HOOD CONFIGURATION**

|   |   |
|---|---|
| UCM-ANG<br>18.25 lbs/8.28 kg<br>EPA: 60 | UCM-WND-ANG<br>21.75 lbs/9.86 kg<br>EPA: 72 |
|---|---|

**BELL HOOD CONFIGURATION**

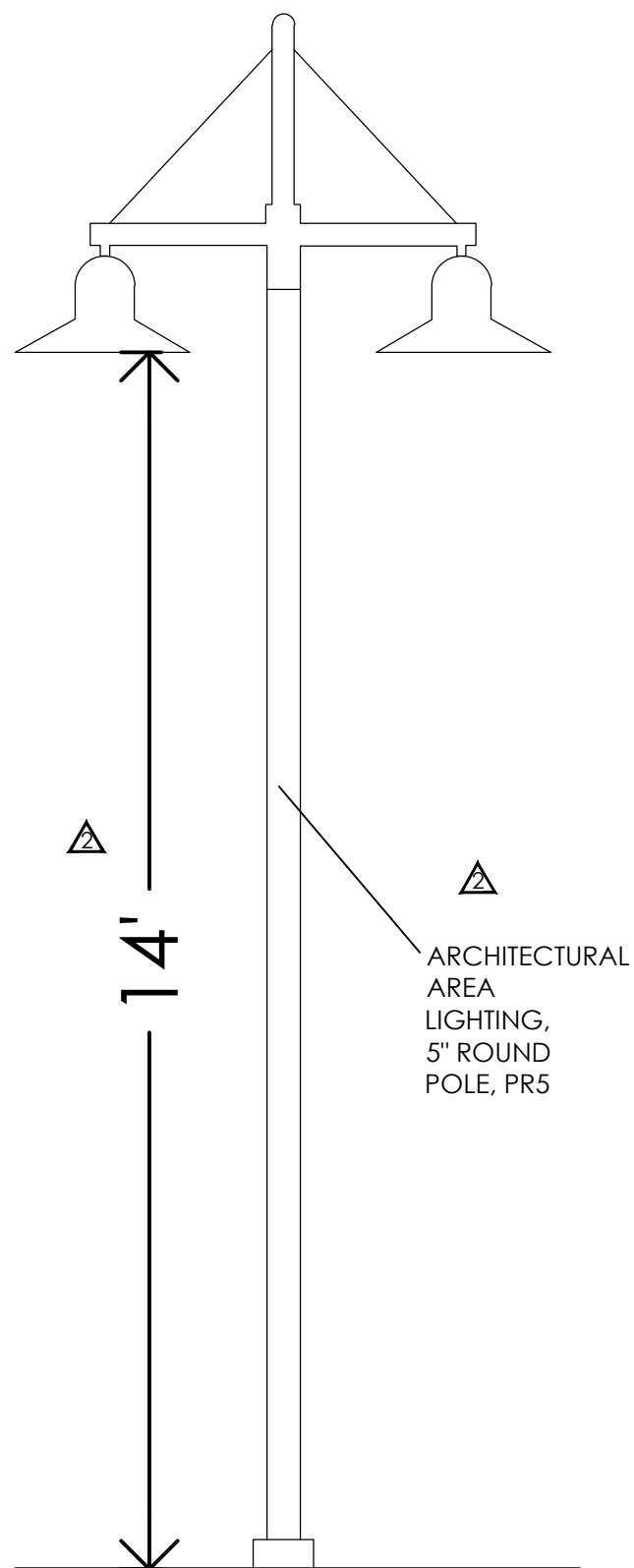
|  |  |
|--|--|
| UCM-BEL<br>20.25 lbs/9.2 kg<br>EPA: 73 | UCM-WND-BEL<br>23.5 lbs/10.6 kg<br>EPA: 85 |
|--|--|

**FLARE HOOD CONFIGURATION**

|                                       |   |
|---------------------------------------|---|
| UCM-FLR<br>18.5 lbs/8.4 kg<br>EPA: 53 | UCM-WND-FLR<br>21.75 lbs/9.87 kg<br>EPA: 65 |
|---------------------------------------|---|

**STRAIGHT HOOD CONFIGURATION**

|                                      |  |
|--------------------------------------|--|
| UCM-STR<br>20 lbs/9.07 kg<br>EPA: 59 | UCM-WND-STR<br>23.25 lbs/10.55 kg<br>EPA: 71 |
|--------------------------------------|--|

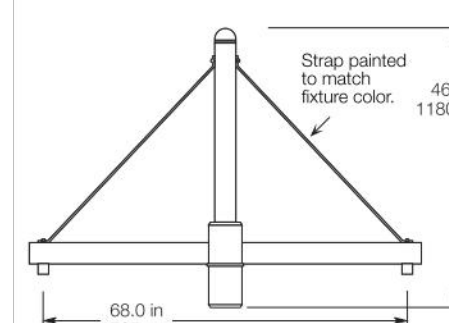


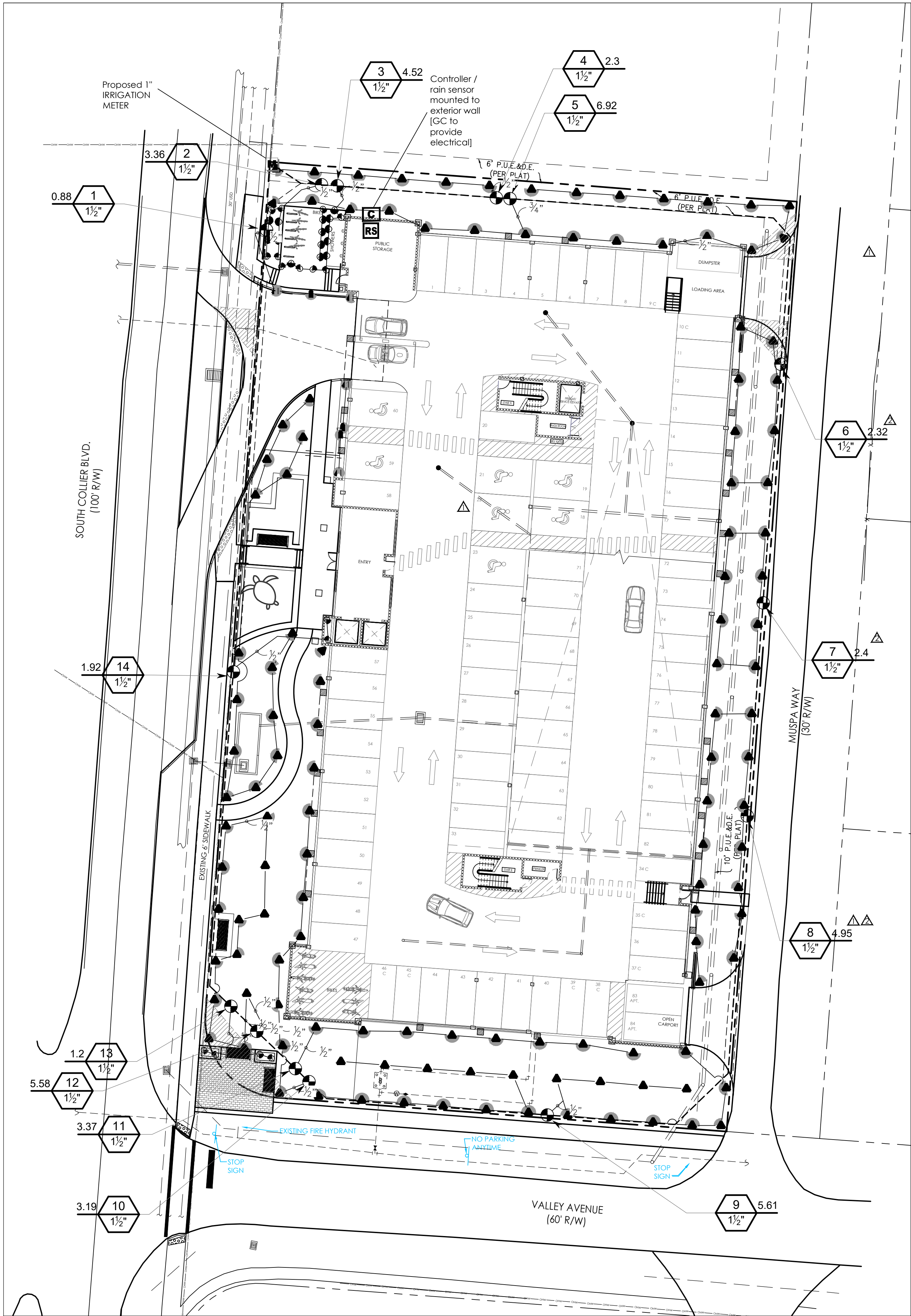
SLA 17 (5)-2  
Twin arms, slips over 5" pole  
WEIGHT: 33 LBS. EPA: 2.09

The arms shall be of one piece unitized aluminum construction, fully welded and assembled. The slip fitter shall be cast aluminum with an internal wireway and pole stop. The arm shall be prewired with a quick connector for easy installation.

The arms shall have a cast aluminum fitter welded to the top of the arm(s) for attaching the fixture. The fixture shall be mounted with three stainless steel bolts through the top of the arm fitter into the fixture. The attachment point shall have a silicone pad for sealing the fixture to arm connection.

The arm shall slip over a 5/125mm diameter pole or tenon. The cast aluminum slip fitter shall have six stainless steel cup point set screws for securing the arm to the pole or tenon.





IRRIGATION ZONES SHALL BE SEPARATED FOR TURF AND GROUPED ACCORDING TO WATER DEMAND / MICROCLIMATE. VALVE LOCATIONS SHALL BE FIELD VERIFIED, GROUPED, AND MARKED PER NOTES.

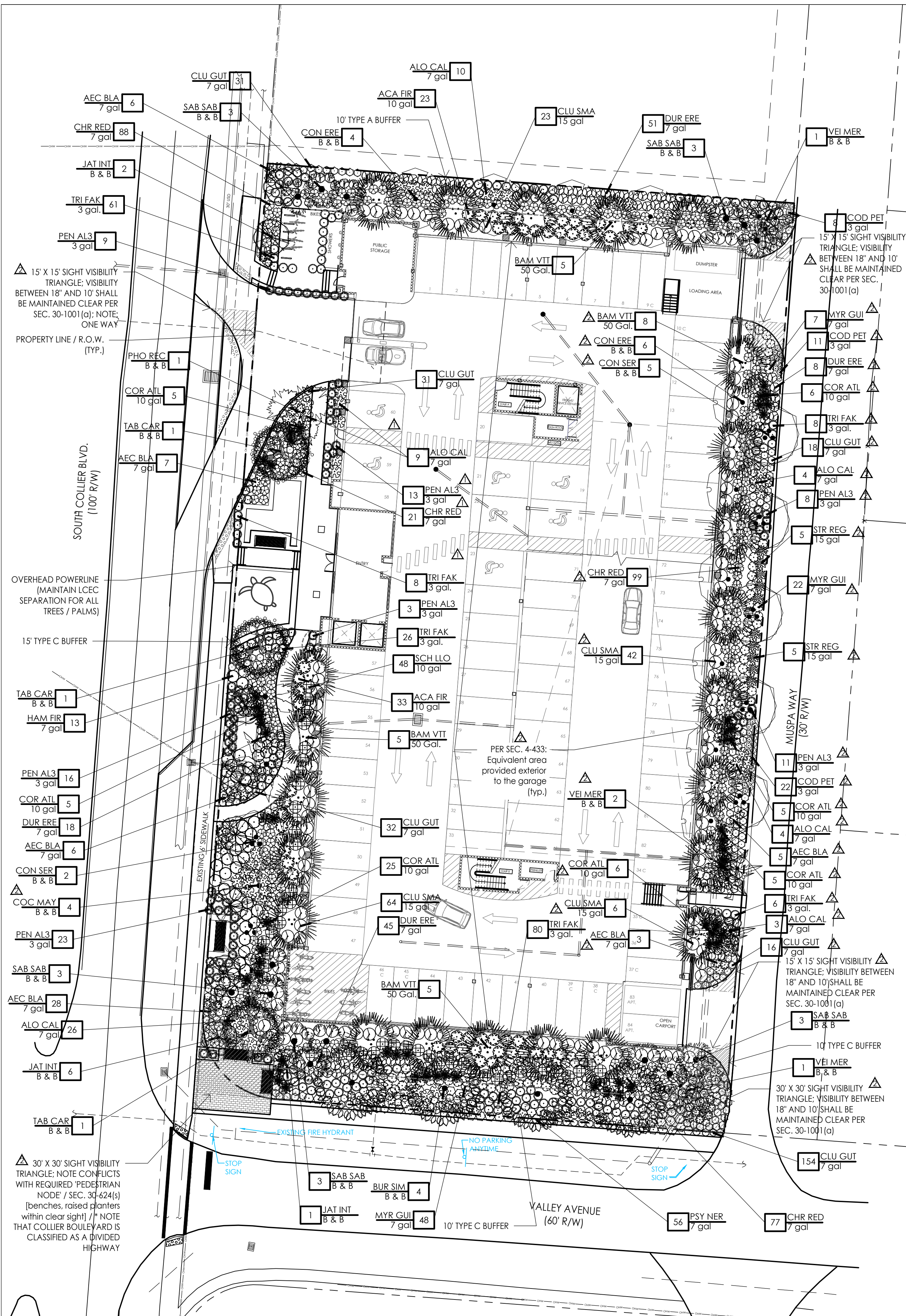
WATERING SCHEDULE SHALL BE MODIFIED DURING IRRIGATION DROUGHT RESTRICTIONS TO ACHIEVE A 1" APPLICATION PER WEEK. SCHEDULE SHOWN IS FOR TWO PER WEEK, PER HEAD TYPE WITH OPERATION TIMES FROM MIDNIGHT TO 8:00 A.M.

- IRRIGATION NOTES:**
- Sleeving indicated shall be coordinated with existing structures, sized according to lateral piping (or group of laterals) to be contained, and adjusted to final field conditions. Coordinate with other trades, such as electrical, to group sleeving in the same trench.
  - No pressurized piping shall be run under roadways, drives, or other structures without sleeving.
  - Valve locations / scale indicated are graphic representations of approximate locations and angles. Field location will be necessary according to the final coverage, circuiting, and area to be irrigated.
  - The calculations are based upon Manufacturer guidelines for PGV valves, MP Rotator heads, and other equipment by Hunter Industries.
  - Sod shall be zoned SEPARATELY from remaining landscape materials. Irrigation within the R.O.W. is not shown and shall be permitted separately.

| IRRIGATION SCHEDULE |  |                         |     |
|---------------------|--|-------------------------|-----|
| SYMBOL              | MANUFACTURER/MODEL/DESCRIPTION   | QTY                     | PSI |
|                     | Hunter PROS-00 SR Series<br>Shrub Spray, Fixed Riser. Co-molded wiper seal with UV Resistant Material.   | 30                      | 40  |
|                     | Hunter MP Strip PROS-12-PRS40-CV<br>Shrub Rotator, 12" pop-up with factory installed check valve, pressure regulated to 40 psi, MP Rotator nozzle. LST=Ivory left strip, SST=Brown side strip, RST=Copper right strip, on PRS40 body.                          | 7 <sup>Δ</sup>          | 40  |
|                     | Hunter MP1000 PROS-12-PRS40-CV<br>Shrub Rotator, 12" pop-up with check valve, pressure regulated to 40 psi, MP Rotator nozzle. M=Maroon adj arc 90 to 210, L=Light Blue 210 to 270 arc, O=Olive 360 arc on PRS40 body.   | 127 <sup>Δ</sup>        | 40  |
| SYMBOL              | MANUFACTURER/MODEL/DESCRIPTION   | QTY                     |     |
|                     | Hunter PGV-151 Globe<br>1-1/2' Plastic Electric Remote Control Valve, for Residential/Light Commercial Use. Female NPT Inlet/Outlet, With Flow Control. Globe Configuration.   | 14                      |     |
|                     | Hunter HCC-2400-PL<br>24 Station Outdoor Wi-Fi enabled, full-functioning controller with touchscreen & two ICM-800 Module. Commercial Use. Plastic Cabinet.  | 1                       |     |
|                     | Hunter MWS<br>Weather Station with rain sensor, wind sensor, 120 VAC, 5 amp. 5 year warranty.  | 1                       |     |
|                     | Irrigation Lateral Line: PVC Class 200   | 2,103 l.f. <sup>Δ</sup> |     |
|                     | Irrigation Mainline: PVC Schedule 40   | 889.4 l.f.              |     |
|                     | Pipe Sleeve: PVC SCH 40<br>Typical pipe sleeve for irrigation pipe. Pipe sleeve size shall allow for irrigation piping and their related couplings to easily slide through sleeving material. Extend sleeves 18 inches beyond edges of paving or construction. | 231.9 l.f.              |     |
|                     |  |                         |     |

△

| WATERING SCHEDULE |                      |              |           |     |     |        |         |        |         |     |          |           |           |          |
|-------------------|----------------------|--------------|-----------|-----|-----|--------|---------|--------|---------|-----|----------|-----------|-----------|----------|
| NUMBER            | MODEL                | TYPE         | PRECIP    | SUN | MON | TUE    | WED     | THU    | FRI     | SAT | IN./WEEK | MIN./WEEK | GAL./WEEK | GAL./DAY |
| 1                 | Hunter PGV-151 Globe | Shrub Rotary | 0.46 in/h |     |     |        | 66 min  |        | 66 min  |     | 1        | 132       | 116       | 58.1     |
| 2                 | Hunter PGV-151 Globe | Shrub Spray  | 2.84 in/h |     |     | 11 min |         | 11 min |         |     | 1        | 22        | 73.9      | 37.0     |
| 3                 | Hunter PGV-151 Globe | Shrub Spray  | 3.18 in/h |     |     | 10 min |         | 10 min |         |     | 1        | 19        | 85.9      | 42.9     |
| 4                 | Hunter PGV-151 Globe | Shrub Rotary | 0.2 in/h  |     |     |        | 150 min |        | 150 min |     | 1        | 299       | 687       | 343      |
| 5                 | Hunter PGV-151 Globe | Shrub Rotary | 0.25 in/h |     |     |        | 119 min |        | 119 min |     | 1        | 238       | 1,647     | 824      |
| 6                 | Hunter PGV-151 Globe | Shrub Rotary | 0.45 in/h |     |     |        | 67 min  |        | 67 min  |     | 1        | 134       | 265       | 133      |
| 7                 | Hunter PGV-151 Globe | Shrub Rotary | Unknown   |     |     |        |         |        |         |     | 1        |           |           |          |
| 8                 | Hunter PGV-151 Globe | Shrub Rotary | 0.33 in/h |     |     |        | 92 min  |        | 92 min  |     | 1        | 184       | 911       | 456      |
| 9                 | Hunter PGV-151 Globe | Shrub Rotary | 0.3 in/h  |     |     |        | 102 min |        | 102 min |     | 1        | 203       | 1,140     | 570      |
| 10                | Hunter PGV-151 Globe | Shrub Rotary | 0.19 in/h |     |     |        | 155 min |        | 155 min |     | 1        | 309       | 984       | 492      |
| 11                | Hunter PGV-151 Globe | Shrub Rotary | 0.19 in/h |     |     |        | 157 min |        | 157 min |     | 1        | 314       | 1,057     | 529      |
| 12                | Hunter PGV-151 Globe | Shrub Rotary | 0.25 in/h |     |     |        | 119 min |        | 119 min |     | 1        | 237       | 1,322     | 661      |
| 13                | Hunter PGV-151 Globe | Shrub Spray  | 1.39 in/h |     |     | 22 min |         | 22 min |         |     | 1        | 44        | 52.8      | 26.4     |
| 14                | Hunter PGV-151 Globe | Shrub Spray  | 0.65 in/h |     |     | 46 min |         | 46 min |         |     | 1        | 92        | 177       | 88.3     |
| TOTALS:           |                      |              |           |     |     | 89     | 1,027   | 89     | 1,027   |     |          | 2,227     | 8,519     | 4,259    |



PROJECT CALCULATION TABLE:

- I. Sec. 30-433. Landscaping and irrigation plan procedures.
- In lieu of interior vehicular use area, exterior use of the equivalent use area as an "exterior shroud" is calculated as follows: **Covered garage parking equals 26,780.23 \* 10% = 2,678.02 s.f. of landscape area with 11 trees; 5,794.99 provided with 11 trees**
- II. Sec. 30-435 (a) (b) (c) (d) (e):
- (1) At least 50 percent of the trees and 50 percent of the shrubs used to fulfill these requirements shall be native or naturalized Southern Floridian species [PROVIDED]
- (2) In addition, for all sites, at least 50 percent of the trees and shrubs used to fulfill these requirements shall be drought-tolerant species as listed in the South Florida Water Management District's Plants for Your Florida-Friendly Landscape Trees and palms. All required new individual trees shall be species having an average mature spread or crown of greater than 20 feet and having trunk(s), which can be maintained in a clean condition with over ten feet of clear wood. Trees adjacent to walkways, bike paths and rights-of-way shall be maintained in a clean condition with over ten feet of clear wood. Trees having an average mature spread or crown less than 20 feet may be substituted by grouping the same so as to create the equivalent of a 20-foot crown spread. For code-required trees, at least 50 percent of the trees shall be canopy type trees and 50 percent may be palms.
- All multiple story structures (single-family, multifamily, commercial, and institutional).

Canopy trees:

- (25 percent) Twelve to 14 feet on average height, six-foot spread, three-inch caliper, seven-foot clear trunk, 65-gallon minimum. Container or ball and burlaped (B&B). [PROVIDED]
- (25 percent) Sixteen to 18 feet on average height, seven-foot spread, four-inch caliper, seven-foot clear trunk, 100 gallon minimum. Container or ball and burlaped (B&B). [PROVIDED]

Palms:

- (25 percent) Twelve-foot clear trunk height minimum with 15-foot minimum mature clear trunk height. [PROVIDED]
- (25 percent) Fifteen-foot clear trunk height minimum with 18-foot minimum mature clear trunk height. [PROVIDED]

A grouping of three palm trees will be equivalent to one canopy tree. Exceptions will be made for Roystonea spp. (Florida Royal Palm) and Phoenix spp. (Canary Island Date Palm not including Roebelenii) which shall count one palm tree for one canopy tree. Also, exceptions will be made for Cocos spp. (Coconut Palm) and Arecastrum spp. (Queen Palm) which shall count two palm trees for one canopy tree. In side and rear yard locations, palms can only be substituted for 50 percent of the canopy tree requirement.

Required Species Mix

Required Number of Trees Minimum Number of Species 2-10; 2 / 11-20; 3 / 21-30; 4 / 31+; 5 [5 PROVIDED]

Screening/buffering. Where screening is required (refer to Table 2) it shall be accomplished by the use of or combination of hedges, shrubs, ground covers, berming, and decorative fences or walls in combination with shrubs, vines and ground covers covering 50 percent or more of the fence or wall. The screening/buffering shall be designed to create within 12 months a 100 percent opaque visual screen/buffer, to be maintained in perpetuity, except for visibility requirements at vehicular access points, street intersections, and pedestrian access points.

- (1) Minimum shrub sizes for opaque hedges at time of installation. Ten-gallon container, 48-inch height, 36-inch spread minimum, with the 48-inch height measured from the top of the root ball to the extent of the upper most foliage planted four feet on center. [SIZES EXCEED CODE]
- (2) Minimum shrub sizes at time of installation adjacent to right-of-way and vehicular use areas. Three-gallon container minimum planted 36 inches on center with a minimum height of 24 inches and spread consistent to the species of plant, but meeting a Florida No. 1 or better nursery grown grade. The 24-inch height is measured from the top of the root ball to the extent of the upper most foliage. [SIZES EXCEED CODE]

III. Sec. 30-440. Minimum landscaping requirements.

Commercial: One canopy tree per 3,000 square feet of pervious site area excluding preserves. This is in addition to other landscaping requirements. [12,839 s.f. / 3,000 = 5 TREES REQUIRED / PROVIDED]

IV. Sec. 30-441. Minimum landscape buffering and screening between uses.

(g) Types of buffers. Within a required buffer area, the following alternative shall be used based on the matrix in Table 2.

Alternative A: Ten-foot-wide landscape buffer with trees spaced no more than 30 feet on center. [NORTH: 170' / 30 = 6 TREES REQUIRED / PROVIDED WITH SABALS @ 3:1, EXCEEDING 50% PALM ALLOWANCE]

Alternative C: A landscape buffer shall be required adjacent to any road right-of-way external to the development project. Said landscape buffer shall be consistent with the provisions of the city master plan, which is incorporated by reference herein. The minimum width of the perimeter landscape buffer shall vary according to the ultimate width of the abutting right-of-way. Where the ultimate width of the right-of-way is zero to 99 feet, the corresponding landscape buffer shall measure at least ten feet in width. Where the ultimate width of the right-of-way is 100 or more feet, the corresponding landscape buffer shall measure at least 15 feet in width.

Trees shall be provided in an amount equivalent of one tree per 30 feet of buffer length abutting the right-of-way. Trees shall be spaced so to provide for an unimpeded proper and mature growth of the trees being used. Trees with less than a 20 foot crown spread shall not be used within this buffer unless under overhead utilities or are trees above the number required of this code.

A double hedge row of at least 24 inches in height at the time of planting and attaining a minimum of three feet height within one year shall be required in the landscape buffer where vehicular areas and parking spaces are adjacent to the road right-of-way. [WEST: 300' / 30 = 10 TREES REQUIRED / PROVIDED, DOUBLE HEDGE PROVIDED WITH ADDITIONAL SHRUBS | SOUTH: 175' / 30 = 6 TREES REQUIRED / PROVIDED WITH SABALS @ 3:1, EXCEEDING 50% PALM ALLOWANCE] , DOUBLE HEDGE PROVIDED WITH ADDITIONAL SHRUBS | EAST: 300' / 30 = 10 TREES REQUIRED / PROVIDED (NOTE EASEMENT ENCUMBRANCE), DOUBLE HEDGE PROVIDED WITH ADDITIONAL SHRUBS

| PLANT SCHEDULE |     |  |  |                    |                                      |
|----------------|-----|--|--|--------------------|--------------------------------------|
| TREES          | QTY | BOTANICAL / COMMON NAME  | CONT   | CAL                | SIZE                                 |
| BAM VTI        | 23  | Bambusa vulgaris 'Vitatta' / Hawaiian Stripe Bamboo              | 50 Gal.  |                    | 25' O.A., Multi-cane, staggered hts. |
| BUR SIM        | 4   | Bursera simaruba / Gumbo Limbo                                   | B & B  | 4"                 | 18' O.A., 7" SPR., 7" C.T.           |
| CON ERE        | 10  | Conocarpus erectus / Buttonwood                                  | B & B  | 4"                 | 18' O.A., 7" SPR., 7" C.T.           |
| CON SER        | 7   | Conocarpus erectus sericeus / Silver Buttonwood                  | B & B  | 3"                 | 12'-14" O.A., 6" SPR., 7" C.T.       |
| JAT INT        | 9   | Jatropha integririma / Spicy Jatropha                            | B & B  | 3"                 | 12'-14" O.A., 6" SPR., 7" C.T.       |
| TAB CAR        | 3   | Tabebuia caraiba / Silver Trumpet                                | B & B  | 4"                 | 18' O.A., 7" SPR., 7" C.T.           |
|                |     |  |  |                    |                                      |
| PALM TREES     | QTY | BOTANICAL / COMMON NAME  | CONT   | CAL                | SIZE                                 |
| COC MAY        | 4   | Cocos nucifera 'Maypan' / Maypan Coconut Palm                    | B & B  |                    | 15' C.T.; 18' MIN. CT.(maintained)   |
| PHO REC        | 1   | Phoenix reclinata / Senegal Date Palm                            | B & B  | Min. 7 trunks      | 15' C.T.; 18' MIN. CT.(maintained)   |
| SAB SAB        | 15  | Sabal palmetto / Cabbage Palmetto                                | B & B  | Slick, curved      | 18', 24', 28' O.A., Staggered        |
| VEI MER        | 4   | Veitchia merrillii / Christmas Palm                              | B & B  |                    | 14', 16', 18' O.A., 12' C.T. Min.    |
|                |     |  |  |                    |                                      |
| SHRUBS         | QTY | BOTANICAL / COMMON NAME  | CONT   | FIELD2             | FIELD3                               |
| ACA FIR        | 56  | Acalypha wilkesiana 'Firestorm' / Firestorm Wilkes' Copperleaf   | 10 gal   | 48" O.A., 4" O.C.  |                                      |
| AEC BLA        | 59  | Aechmea blanchetiana / Orange Bromeliad                          | 7 gal  | 24" O.A.           |                                      |
| ALO CAL        | 56  | Alcacia odora 'California' / Dwarf Elephant Ear                  | 7 gal  | 24" O.A., 4" O.C.  |                                      |
| CHA RED        | 303 | Chrysobalanus icaco 'Red Tip' / Red Tip Cocoplum                 | 7 gal  | 24" O.A., 36" O.C. |                                      |
| CLU SMA        | 135 | Clusia guttifera / Clusia  | 15 gal   | 5" O.A., 4" O.C.   |                                      |
| CLU GUT        | 343 | Clusia guttifera nana / Dwarf Clusia                             | 7 gal  | 12" O.C., 3" O.C.  |                                      |
| COD PET        | 41  | Codiaeum variegatum 'Petra' / Petra Croton                       | 3 gal  | 12" O.A., 24" O.C. |                                      |
| COR ATL        | 57  | Cordyline fruticosa 'Auntie Lou' / Auntie Lou Ti Plant           | 10 gal   | 48" O.A.           |                                      |
| DUR ERE        | 122 | Duranta erecta 'Gold Mound' / Gold Mound Dewdrops                | 7 gal  | 24" O.A., 36" O.C. |                                      |
| HAM FIR        | 44  | Hamelia patens / Firebush  | 7 gal  | 24" O.A., 36" O.C. |                                      |
| MYR GUI        | 77  | Myrsine guianensis / Mysine                                      | 7 gal  | 18" O.A., 36" O.C. |                                      |
| PSY NER        | 56  | Psychotria nervosa / Wild Coffee                                 | 7 gal  | 18" O.A., 36" O.C. |                                      |
| SCH LLO        | 48  | Schefflera arboricola 'Emerald Green' / Emerald Green Schefflera | 10 gal   | 48" O.A., 4" O.C.  |                                      |
| STR REG        | 10  | Strelitzia reginae / Orange Bird Of Paradise                     | 15 gal   | 24" O.A., 4" O.C.  |                                      |
|                |     |  |  |                    |                                      |
| GRASSES        | QTY | BOTANICAL / COMMON NAME  | CONT   | FIELD2             | FIELD3                               |
| PEN AL3        | 83  | Pennisetum setaceum 'Alba' / White Fountain Grass                | 3 gal  | 24" O.A.           |                                      |
| TRI FAK        | 189 | Tripsacum dactyloides / Fakahatchee Grass                        | 3 gal  | 24" O.A.           |                                      |
|                |     |  |  |                    |                                      |
| MULCH          |     | Field verify final bed(s) quantity                               | Grade 'A' Eucalyptus; 3" depth max. after water-in (Pine straw for slopes > 4:1) |                    |                                      |

NOTE: OVERHEAD POWERLINE  
ALONG SOUTH COLLIER BOULEVARD  
- PLACE AND MAINTAIN  
ACCORDING TO LCEC SEPARATION

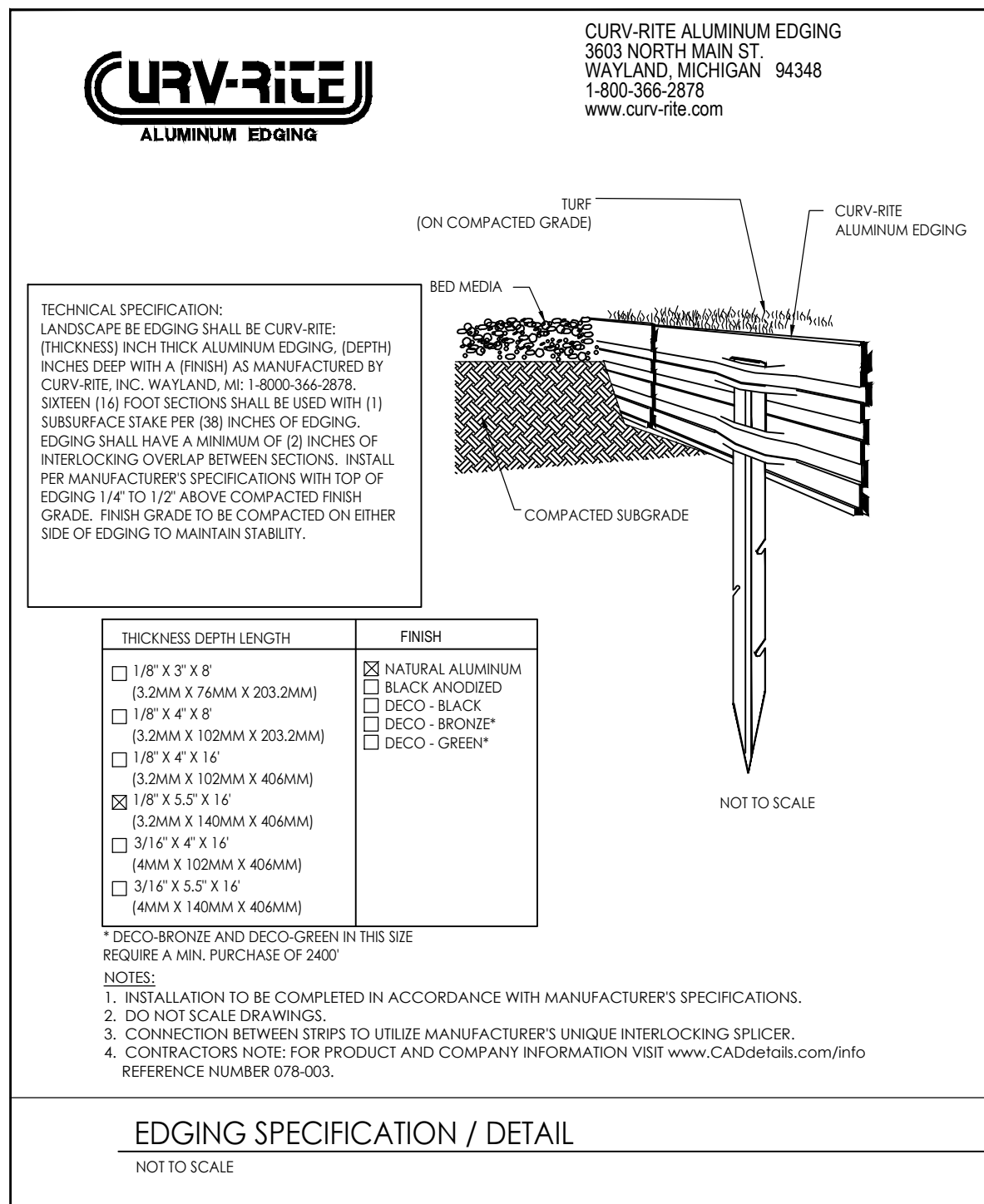
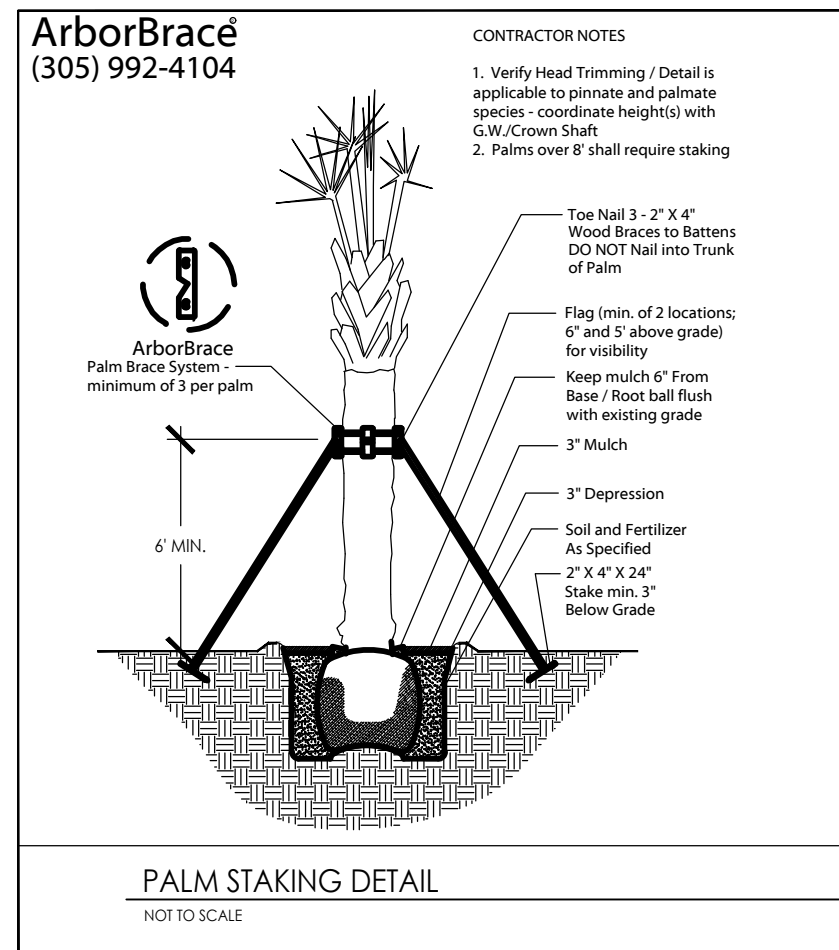
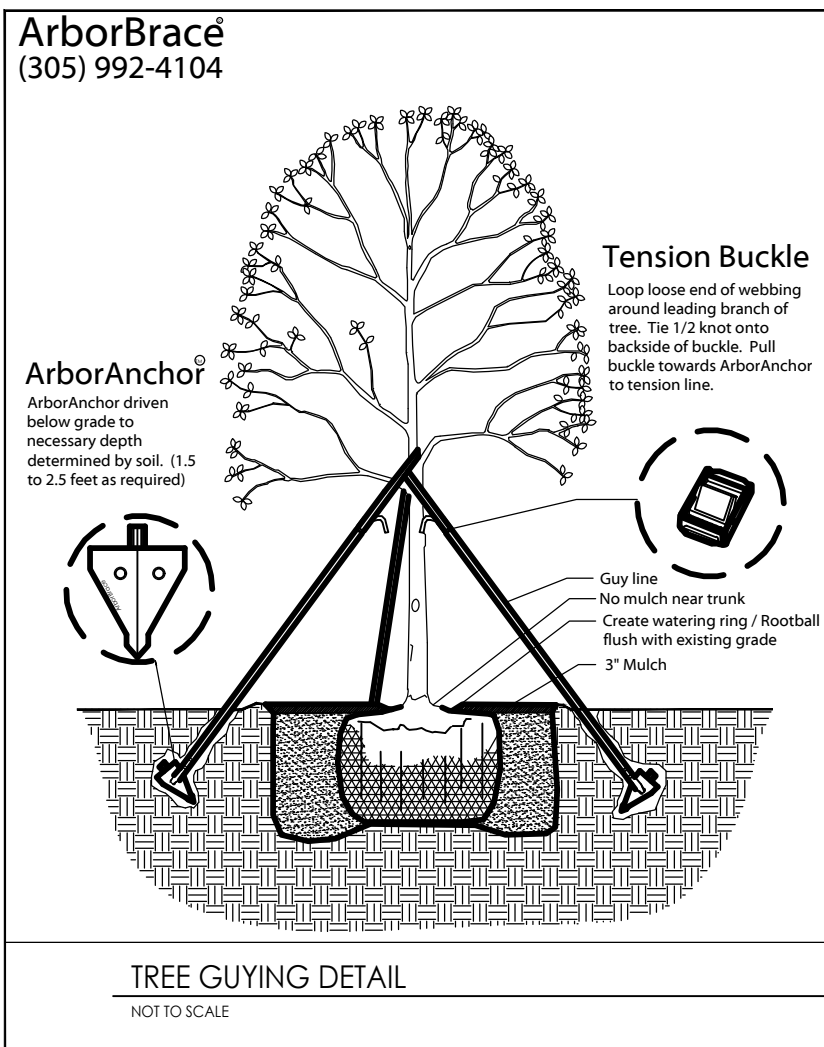
| SITE SUMMARY     |           |           |
|------------------|-----------|-----------|
| DESCRIPTION      | AREA      | % OF AREA |
| TOTAL IMPERVIOUS | 38,027 SF | 75%       |
| TOTAL PERVIOUS   | 12,839 SF | 25%       |
| TOTAL SITE AREA  | 50,866 SF | 100%      |
| USE ZONE C-3     |           |           |

GENERAL NOTES

- MULCH: Max. 3" layer (after watering in) required, Extending min. 12" ring from trunk in all directions.
- STAKING: Re-staked within 24 hours of a blow over / staking failure. Remove between 6 and 12 months after planting.
- LIGHT POLES: Contractor shall ensure placement of all trees maintain a minimum 12.5' horizontal clearance between the trunk and face of street light poles.
- EASEMENTS: Written permission must be obtained for any planting.
- LIMEROCK: Shall be excavated from planting holes / planting areas in parking lots.
- SIGNAGE: Coordinate final locations on-site to reduce conflicts.
- MAINTENANCE: Shall abide by all Codes. Removals shall be verified with pertinent Codes, Surveys, Permits, etc. prior to action.
- IRRIGATION: 100% coverage required, timers with automatic overrides for rain, separate zoning is required for different water use areas, and watering within guidelines established by the SFWMD and/or City.
- PLANTINGS: Plantings must be a minimum of 24" from the back of curb.

## LANDSCAPE INSTALLATION NOTES:

1. A set of Construction Documents and/or Approved Code-required Plans shall be on site at all times.
2. All utilities, easements, right-of-way, Ownership, and/or other survey data shall be verified by the General Contractor, Sitework Contractor, and/or Landscape Contractor prior to the Commencement of Work.
3. Compliance / Permit acquisition and/or display is required for Code-relevant requirements (such as, but not limited to: removals, trimming, replacement, etc.).
4. Verify Plant Quantities and Specifications with the Landscape Architect (also referenced as "L.A." hereafter). Notify the Landscape Architect immediately if discrepancies are noted. Planting Plan shall take precedence over 'Plant List Quantities.' The L.A. reserves the right for material rejection if the installation does not correspond to the Plant List 'Specification / Remark'.
5. Plant material is to be Florida Grade #1 minimum and Florida Fancy for plant material specified as "Specimen." Trees are to be considered single trunk and meet the minimum standard for Code within the applicable jurisdiction.
6. Sizes/specifications are considered minimum. Installation material is to meet or exceed these requirements - verify any discrepancy prior to material purchase, delivery, and/or installation.
7. The Landscape Contractor shall verify the location of plant material with the L.A. prior to installation - contact the L.A. for specific guidelines. If a site conflict / potential is noted, notify the Landscape Architect prior to material installation. The L.A. reserves the right for material relocation if the installation does not correspond to the Planting Plan.
8. The Landscape Contractor and/or Irrigation Contractor shall be responsible for damaged site utilities, infrastructure, etc. Repair / Replace shall be a requirement.
9. Verify site removals, relocations, and/or protected items prior to Bid Preparation. This may include but not be limited to: soil, sod, plant material, stumps, etc. The Landscape Contractor shall be required to complete work as outlined with the Planting Plan(s), Specifications, and Notes.
10. Quantities and specification are subject to adjustment, relocation, and/or removal during or after the installation and subsequent approval process by the L.A.
11. Exotic(s) or Nuisance Plants as defined by the local agency(ies) shall supercede State requirements; however, the Florida Exotic Pest Plant Council (FLEPPC) and/or UF-IFAS Standards shall be used as a database to justify removals if no local ordinance/Code requirement exists.
12. The Landscape Contractor shall execute pruning via a Certified Arborist and using standards as established by the International Society of Arboriculture. All pruning, upon request, shall be advised by the L.A.
13. Trees and palms over 8' in height shall be staked.
14. The Landscape Contractor and/or Irrigation Contractor shall be responsible for: 1) plant warranties and replacements, as specified within their respective agreement(s) 2) plant material maintenance until "Substantial Completion" 3) plant material protection adequacy 4) Scope of Work verification and execution 5) coordination of all Subcontractor(s)
15. The Owner / General Contractor shall be responsible for: 1) Providing Final Grade, Site Access, Security of the site 2) Contract review and acceptance of terms 3) Plant / Irrigation Maintenance coordination 4) Payment milestones
16. Contractor shall ensure placement of all trees maintain a minimum 12.5' horizontal clearance between the trunk and face of street light poles.



## IRRIGATION NOTES:

1. The site is to contain 100% Irrigation Coverage via an efficient system utilizing standards common to the industry.
2. The Irrigation system is to be controlled by a rain sensor switch connected to the System controller. The location of the System controller is to be verified and coordinated as necessary to provide access and electrical connection(s).
3. Verify irrigation meter location and see note #5.
4. Irrigation sleeving locations indicated are diagrammatic and serve only as a guide for installation purposes. Irrigation sleeving is to be a minimum of Schedule 40 PVC. This work is to be coordinated by the General Contractor. The Irrigation Contractor/Subcontractor shall not be responsible for sleeving installation unless this work is in the Irrigation Scope of Work. Sleeving shall be clearly marked, flagged, or otherwise delineated above grade to avoid damage and provide ease of location for future use. Sleeving shall be utilized in areas where piping must cross a greater than 5' width, such as roads and walks.
5. Backflow Preventer shall be required per Industry standards and City of Marco Island Codes.
6. Avoid overspray on pavement, buildings, etc. Utilize pressure-compensating heads for elimination of aerosol spray (This is a standard feature of MP Rotator, Hunter spray heads).
7. Verify pressure and flow rate after the Meter/Backflow assembly prior to bid submission. The design is based upon the following operating parameters: 60 GPM Max. and 40 PSI Min.-60 PSI Max.
8. Pipe sizing shall be determined by the Friction Loss Method and water velocity shall not exceed 5 cubic feet per second.
9. Constant pressure piping shall be SCH 40 PVC.
10. The Irrigation Contractor shall supply As-built drawings and material cut sheets upon installation completion and as a term of Final Acceptance. This cost shall be accommodated in the bid.
11. Zones shall be marked in the controller box and corresponding valves shall have affixed to the Valve Cover a waterproof, fade-resistant tag.
12. Verify installation and parts warranty prior to Contract execution.
13. Irrigation heads in planting beds shall be 12" pop-up minimum and 6" pop-up minimum in sod areas. Risers, if installed, shall be black pvc consistent with later piping. Substitution(s) shall not be accepted unless the L.A. is notified prior to installation. If substituted without notification, a CREDIT shall be issued to the client for comparable pop-up sprays. Verify remaining type(s), if necessary. Install quick couplers as required or as noted.
14. This system shall be automated, provide a moisture sensing device, and will avoid the application (or indirect runoff of irrigation water) of water to impervious areas.

| FRICTION LOSS CHARACTERISTICS              |       |       |       |        |        |       |        |       |       |        | IRRIGATION MAINLINE SIZING |       |       |       |        |        |       |        |       |       |        |
|--|-------|-------|-------|--------|--------|-------|--------|-------|-------|--------|----------------------------|-------|-------|-------|--------|--------|-------|--------|-------|-------|--------|
| PVC SCHEDULE 40 IPS PLASTIC PIPE           |       |       |       |        |        |       |        |       |       |        |                            |       |       |       |        |        |       |        |       |       |        |
| (11.50, 12.500 C = 100)                    |       |       |       |        |        |       |        |       |       |        |                            |       |       |       |        |        |       |        |       |       |        |
| PSI loss per 100 feet of tube (PSI/100 FT) |       |       |       |        |        |       |        |       |       |        |                            |       |       |       |        |        |       |        |       |       |        |
| Sizes 1/2" thru 6"                         |       |       |       |        |        |       |        |       |       |        |                            |       |       |       |        |        |       |        |       |       |        |
| Flow GPM                                   | 1/2"  | 3/4"  | 1"    | 1 1/4" | 1 1/2" | 2"    | 2 1/2" | 3"    | 4"    | 6"     | Flow GPM                   | 1/2"  | 3/4"  | 1"    | 1 1/4" | 1 1/2" | 2"    | 2 1/2" | 3"    | 4"    | 6"     |
| 10   | 0.002 | 0.001 | 0.001 | 0.001  | 0.001  | 0.001 | 0.001  | 0.001 | 0.001 | 0.001  | 10                         | 0.002 | 0.001 | 0.001 | 0.001  | 0.001  | 0.001 | 0.001  | 0.001 | 0.001 | 0.001  |
| 20   | 0.008 | 0.004 | 0.002 | 0.003  | 0.004  | 0.006 | 0.008  | 0.012 | 0.016 | 0.024  | 20                         | 0.008 | 0.004 | 0.002 | 0.003  | 0.004  | 0.006 | 0.008  | 0.012 | 0.016 | 0.024  |
| 30   | 0.018 | 0.009 | 0.005 | 0.007  | 0.010  | 0.015 | 0.022  | 0.032 | 0.048 | 0.072  | 30                         | 0.018 | 0.009 | 0.005 | 0.007  | 0.010  | 0.015 | 0.022  | 0.032 | 0.048 | 0.072  |
| 40   | 0.032 | 0.016 | 0.010 | 0.013  | 0.018  | 0.028 | 0.040  | 0.060 | 0.096 | 0.144  | 40                         | 0.032 | 0.016 | 0.010 | 0.013  | 0.018  | 0.028 | 0.040  | 0.060 | 0.096 | 0.144  |
| 50   | 0.048 | 0.024 | 0.015 | 0.019  | 0.026  | 0.040 | 0.058  | 0.088 | 0.144 | 0.216  | 50                         | 0.048 | 0.024 | 0.015 | 0.019  | 0.026  | 0.040 | 0.058  | 0.088 | 0.144 | 0.216  |
| 60   | 0.064 | 0.032 | 0.020 | 0.026  | 0.036  | 0.054 | 0.078  | 0.120 | 0.216 | 0.324  | 60                         | 0.064 | 0.032 | 0.020 | 0.026  | 0.036  | 0.054 | 0.078  | 0.120 | 0.216 | 0.324  |
| 70   | 0.080 | 0.040 | 0.025 | 0.032  | 0.044  | 0.066 | 0.096  | 0.150 | 0.288 | 0.432  | 70                         | 0.080 | 0.040 | 0.025 | 0.032  | 0.044  | 0.066 | 0.096  | 0.150 | 0.288 | 0.432  |
| 80   | 0.096 | 0.048 | 0.030 | 0.038  | 0.052  | 0.078 | 0.112  | 0.180 | 0.360 | 0.540  | 80                         | 0.096 | 0.048 | 0.030 | 0.038  | 0.052  | 0.078 | 0.112  | 0.180 | 0.360 | 0.540  |
| 90   | 0.112 | 0.056 | 0.035 | 0.044  | 0.060  | 0.090 | 0.132  | 0.216 | 0.432 | 0.648  | 90                         | 0.112 | 0.056 | 0.035 | 0.044  | 0.060  | 0.090 | 0.132  | 0.216 | 0.432 | 0.648  |
| 100  | 0.128 | 0.064 | 0.040 | 0.050  | 0.068  | 0.102 | 0.150  | 0.240 | 0.480 | 0.720  | 100                        | 0.128 | 0.064 | 0.040 | 0.050  | 0.068  | 0.102 | 0.150  | 0.240 | 0.480 | 0.720  |
| 120  | 0.160 | 0.080 | 0.050 | 0.064  | 0.088  | 0.132 | 0.200  | 0.320 | 0.640 | 0.960  | 120                        | 0.160 | 0.080 | 0.050 | 0.064  | 0.088  | 0.132 | 0.200  | 0.320 | 0.640 | 0.960  |
| 140  | 0.192 | 0.096 | 0.060 | 0.076  | 0.104  | 0.156 | 0.232  | 0.384 | 0.768 | 1.152  | 140                        | 0.192 | 0.096 | 0.060 | 0.076  | 0.104  | 0.156 | 0.232  | 0.384 | 0.768 | 1.152  |
| 160  | 0.224 | 0.112 | 0.070 | 0.088  | 0.120  | 0.180 | 0.272  | 0.450 | 0.900 | 1.360  | 160                        | 0.224 | 0.112 | 0.070 | 0.088  | 0.120  | 0.180 | 0.272  | 0.450 | 0.900 | 1.360  |
| 180  | 0.256 | 0.128 | 0.080 | 0.100  | 0.136  | 0.204 | 0.312  | 0.510 | 1.020 | 1.536  | 180                        | 0.256 | 0.128 | 0.080 | 0.100  | 0.136  | 0.204 | 0.312  | 0.510 | 1.020 | 1.536  |
| 200  | 0.288 | 0.144 | 0.090 | 0.112  | 0.152  | 0.228 | 0.352  | 0.576 | 1.152 | 1.728  | 200                        | 0.288 | 0.144 | 0.090 | 0.112  | 0.152  | 0.228 | 0.352  | 0.576 | 1.152 | 1.728  |
| 220  | 0.320 | 0.160 | 0.100 | 0.124  | 0.168  | 0.252 | 0.392  | 0.648 | 1.296 | 1.944  | 220                        | 0.320 | 0.160 | 0.100 | 0.124  | 0.168  | 0.252 | 0.392  | 0.648 | 1.296 | 1.944  |
| 240  | 0.352 | 0.176 | 0.110 | 0.136  | 0.184  | 0.288 | 0.440  | 0.720 | 1.440 | 2.160  | 240                        | 0.352 | 0.176 | 0.110 | 0.136  | 0.184  | 0.288 | 0.440  | 0.720 | 1.440 | 2.160  |
| 260  | 0.384 | 0.192 | 0.120 | 0.148  | 0.200  | 0.312 | 0.496  | 0.810 | 1.584 | 2.376  | 260                        | 0.384 | 0.192 | 0.120 | 0.148  | 0.200  | 0.312 | 0.496  | 0.810 | 1.584 | 2.376  |
| 280  | 0.416 | 0.208 | 0.130 | 0.160  | 0.216  | 0.344 | 0.544  | 0.900 | 1.728 | 2.592  | 280                        | 0.416 | 0.208 | 0.130 | 0.160  | 0.216  | 0.344 | 0.544  | 0.900 | 1.728 | 2.592  |
| 300  | 0.448 | 0.224 | 0.140 | 0.172  | 0.232  | 0.376 | 0.600  | 1.008 | 1.872 | 2.808  | 300                        | 0.448 | 0.224 | 0.140 | 0.172  | 0.232  | 0.376 | 0.600  | 1.008 | 1.872 | 2.808  |
| 320  | 0.480 | 0.240 | 0.150 | 0.184  | 0.256  | 0.408 | 0.672  | 1.116 | 2.016 | 3.024  | 320                        | 0.480 | 0.240 | 0.150 | 0.184  | 0.256  | 0.408 | 0.672  | 1.116 | 2.016 | 3.024  |
| 340  | 0.512 | 0.256 | 0.160 | 0.196  | 0.272  | 0.440 | 0.744  | 1.230 | 2.160 | 3.240  | 340                        | 0.512 | 0.256 | 0.160 | 0.196  | 0.272  | 0.440 | 0.744  | 1.230 | 2.160 | 3.240  |
| 360  | 0.544 | 0.272 | 0.170 | 0.208  | 0.296  | 0.480 | 0.816  | 1.350 | 2.304 | 3.456  | 360                        | 0.544 | 0.272 | 0.170 | 0.208  | 0.296  | 0.480 | 0.816  | 1.350 | 2.304 | 3.456  |
| 380  | 0.576 | 0.288 | 0.180 | 0.220  | 0.312  | 0.512 | 0.896  | 1.476 | 2.448 | 3.672  | 380                        | 0.576 | 0.288 | 0.180 | 0.220  | 0.312  | 0.512 | 0.896  | 1.476 | 2.448 | 3.672  |
| 400  | 0.608 | 0.304 | 0.190 | 0.232  | 0.336  | 0.544 | 0.976  | 1.608 | 2.592 | 3.888  | 400                        | 0.608 | 0.304 | 0.190 | 0.232  | 0.336  | 0.544 | 0.976  | 1.608 | 2.592 | 3.888  |
| 420  | 0.640 | 0.320 | 0.200 | 0.244  | 0.360  | 0.576 | 1.056  | 1.740 | 2.736 | 4.104  | 420                        | 0.640 | 0.320 | 0.200 | 0.244  | 0.360  | 0.576 | 1.056  | 1.740 | 2.736 | 4.104  |
| 440  | 0.672 | 0.336 | 0.210 | 0.256  | 0.384  | 0.608 | 1.136  | 1.884 | 2.880 | 4.320  | 440                        | 0.672 | 0.336 | 0.210 | 0.256  | 0.384  | 0.608 | 1.136  | 1.884 | 2.880 | 4.320  |
| 460  | 0.704 | 0.352 | 0.220 | 0.268  | 0.408  | 0.640 | 1.216  | 2.028 | 3.024 | 4.536  | 460                        | 0.704 | 0.352 | 0.220 | 0.268  | 0.408  | 0.640 | 1.216  | 2.028 | 3.024 | 4.536  |
| 480  | 0.736 | 0.368 | 0.230 | 0.280  | 0.432  | 0.672 | 1.296  | 2.176 | 3.168 | 4.752  | 480                        | 0.736 | 0.368 | 0.230 | 0.280  | 0.432  | 0.672 | 1.296  | 2.176 | 3.168 | 4.752  |
| 500  | 0.768 | 0.384 | 0.240 | 0.292  | 0.456  | 0.704 | 1.376  | 2.328 | 3.312 | 4.968  | 500                        | 0.768 | 0.384 | 0.240 | 0.292  | 0.456  | 0.704 | 1.376  | 2.328 | 3.312 | 4.968  |
| 520  | 0.800 | 0.400 | 0.250 | 0.304  | 0.480  | 0.736 | 1.456  | 2.480 | 3.456 | 5.184  | 520                        | 0.800 | 0.400 | 0.250 | 0.304  | 0.480  | 0.736 | 1.456  | 2.480 | 3.456 | 5.184  |
| 540  | 0.832 | 0.416 | 0.260 | 0.316  | 0.504  | 0.768 | 1.536  | 2.632 | 3.600 | 5.400  | 540                        | 0.832 | 0.416 | 0.260 | 0.316  | 0.504  | 0.768 | 1.536  | 2.632 | 3.600 | 5.400  |
| 560  | 0.864 | 0.432 | 0.270 | 0.328  | 0.528  | 0.800 | 1.616  | 2.784 | 3.744 | 5.616  | 560                        | 0.864 | 0.432 | 0.270 | 0.328  | 0.528  | 0.800 | 1.616  | 2.784 | 3.744 | 5.616  |
| 580  | 0.896 | 0.448 | 0.280 | 0.340  | 0.552  | 0.832 | 1.696  | 2.936 | 3.888 | 5.832  | 580                        | 0.896 | 0.448 | 0.280 | 0.340  | 0.552  | 0.832 | 1.696  | 2.936 | 3.888 | 5.832  |
| 600  | 0.928 | 0.464 | 0.290 | 0.352  | 0.576  | 0.864 | 1.776  | 3.088 | 4.032 | 6.048  | 600                        | 0.928 | 0.464 | 0.290 | 0.352  | 0.576  | 0.864 | 1.776  | 3.088 | 4.032 | 6.048  |
| 620  | 0.960 | 0.480 | 0.300 | 0.364  | 0.600  | 0.896 | 1.856  | 3.240 | 4.176 | 6.264  | 620                        | 0.960 | 0.480 | 0.300 | 0.364  | 0.600  | 0.896 | 1.856  | 3.240 | 4.176 | 6.264  |
| 640  | 0.992 | 0.496 | 0.310 | 0.376  | 0.624  | 0.928 | 1.936  | 3.392 | 4.320 | 6.480  | 640                        | 0.992 | 0.496 | 0.310 | 0.376  | 0.624  | 0.928 | 1.936  | 3.392 | 4.320 | 6.480  |
| 660  | 1.024 | 0.512 | 0.320 | 0.388  | 0.648  | 0.960 | 2.016  | 3.544 | 4.464 | 6.696  | 660                        | 1.024 | 0.512 | 0.320 | 0.388  | 0.648  | 0.960 | 2.016  | 3.544 | 4.464 | 6.696  |
| 680  | 1.056 | 0.528 | 0.330 | 0.400  | 0.672  | 0.992 | 2.096  | 3.696 | 4.608 | 6.912  | 680                        | 1.056 | 0.528 | 0.330 | 0.400  | 0.672  | 0.992 | 2.096  | 3.696 | 4.608 | 6.912  |
| 700  | 1.088 | 0.544 | 0.340 | 0.412  | 0.696  | 1.024 | 2.176  | 3.848 | 4.752 | 7.128  | 700                        | 1.088 | 0.544 | 0.340 | 0.412  | 0.696  | 1.024 | 2.176  | 3.848 | 4.752 | 7.128  |
| 720  | 1.120 | 0.560 | 0.350 | 0.424  | 0.720  | 1.056 | 2.256  | 4.000 | 4.896 | 7.344  | 720                        | 1.120 | 0.560 | 0.350 | 0.424  | 0.720  | 1.056 | 2.256  | 4.000 | 4.896 | 7.344  |
| 740  | 1.152 | 0.576 | 0.360 | 0.436  | 0.744  | 1.088 | 2.336  | 4.152 | 5.040 | 7.560  | 740                        | 1.152 | 0.576 | 0.360 | 0.436  | 0.744  | 1.088 | 2.336  | 4.152 | 5.040 | 7.560  |
| 760  | 1.184 | 0.592 | 0.370 | 0.448  | 0.768  | 1.120 | 2.416  | 4.304 | 5.184 | 7.776  | 760                        | 1.184 | 0.592 | 0.370 | 0.448  | 0.768  | 1.120 | 2.416  | 4.304 | 5.184 | 7.776  |
| 780  | 1.216 | 0.608 | 0.380 | 0.460  | 0.792  | 1.152 | 2.496  | 4.456 | 5.328 | 7.992  | 780                        | 1.216 | 0.608 | 0.380 | 0.460  | 0.792  | 1.152 | 2.496  | 4.456 | 5.328 | 7.992  |
| 800  | 1.248 | 0.624 | 0.390 | 0.472  | 0.816  | 1.184 | 2.576  | 4.608 | 5.472 | 8.208  | 800                        | 1.248 | 0.624 | 0.390 | 0.472  | 0.816  | 1.184 | 2.576  | 4.608 | 5.472 | 8.208  |
| 820  | 1.280 | 0.640 | 0.400 | 0.484  | 0.840  | 1.216 | 2.656  | 4.760 | 5.616 | 8.424  | 820                        | 1.280 | 0.640 | 0.400 | 0.484  | 0.840  | 1.216 | 2.656  | 4.760 | 5.616 | 8.424  |
| 840  | 1.312 | 0.656 | 0.410 | 0.496  | 0.864  | 1.248 | 2.736  | 4.912 | 5.760 | 8.640  | 840                        | 1.312 | 0.656 | 0.410 | 0.496  | 0.864  | 1.248 | 2.736  | 4.912 | 5.760 | 8.640  |
| 860  | 1.344 | 0.672 | 0.420 | 0.508  | 0.888  | 1.280 | 2.816  | 5.064 | 5.904 | 8.856  | 860                        | 1.344 | 0.672 | 0.420 | 0.508  | 0.888  | 1.280 | 2.816  | 5.064 | 5.904 | 8.856  |
| 880  | 1.376 | 0.688 | 0.430 | 0.520  | 0.912  | 1.312 | 2.896  | 5.216 | 6.048 | 9.072  | 880                        | 1.376 | 0.688 | 0.430 | 0.520  | 0.912  | 1.312 | 2.896  | 5.216 | 6.048 | 9.072  |
| 900  | 1.408 | 0.704 | 0.440 | 0.532  | 0.936  | 1.344 | 2.976  | 5.368 | 6.192 | 9.288  | 900                        | 1.408 | 0.704 | 0.440 | 0.532  | 0.936  | 1.344 | 2.976  | 5.368 | 6.192 | 9.288  |
| 920  | 1.440 | 0.720 | 0.450 | 0.544  | 0.960  | 1.376 | 3.056  | 5.520 | 6.336 | 9.504  | 920                        | 1.440 | 0.720 | 0.450 | 0.544  | 0.960  | 1.376 | 3.056  | 5.520 | 6.336 | 9.504  |
| 940  | 1.472 | 0.736 | 0.460 | 0.556  | 0.984  | 1.408 | 3.136  | 5.672 | 6.480 | 9.720  | 940                        | 1.472 | 0.736 | 0.460 | 0.556  | 0.984  | 1.408 | 3.136  | 5.672 | 6.480 | 9.720  |
| 960  | 1.504 | 0.752 | 0.470 | 0.568  | 1.008  | 1.440 | 3.216  | 5.824 | 6.624 | 9.936  | 960                        | 1.504 | 0.752 | 0.470 | 0.568  | 1.008  | 1.440 | 3.216  | 5.824 | 6.624 | 9.936  |
| 980  | 1.536 | 0.768 | 0.480 | 0.580  | 1.032  | 1.472 | 3.296  | 5.976 | 6.768 | 10.152 | 980                        | 1.536 | 0.768 | 0.480 | 0.580  | 1.032  | 1.472 | 3.296  | 5.976 | 6.768 | 10.152 |
| 1000                                       | 1.568 | 0.784 | 0.490 | 0.592  | 1.056  | 1.504 | 3.376  | 6.128 | 6.912 | 10.368 | 1000                       | 1.568 | 0.784 | 0.490 | 0.592  | 1.056  |       |        |       |       |        |