



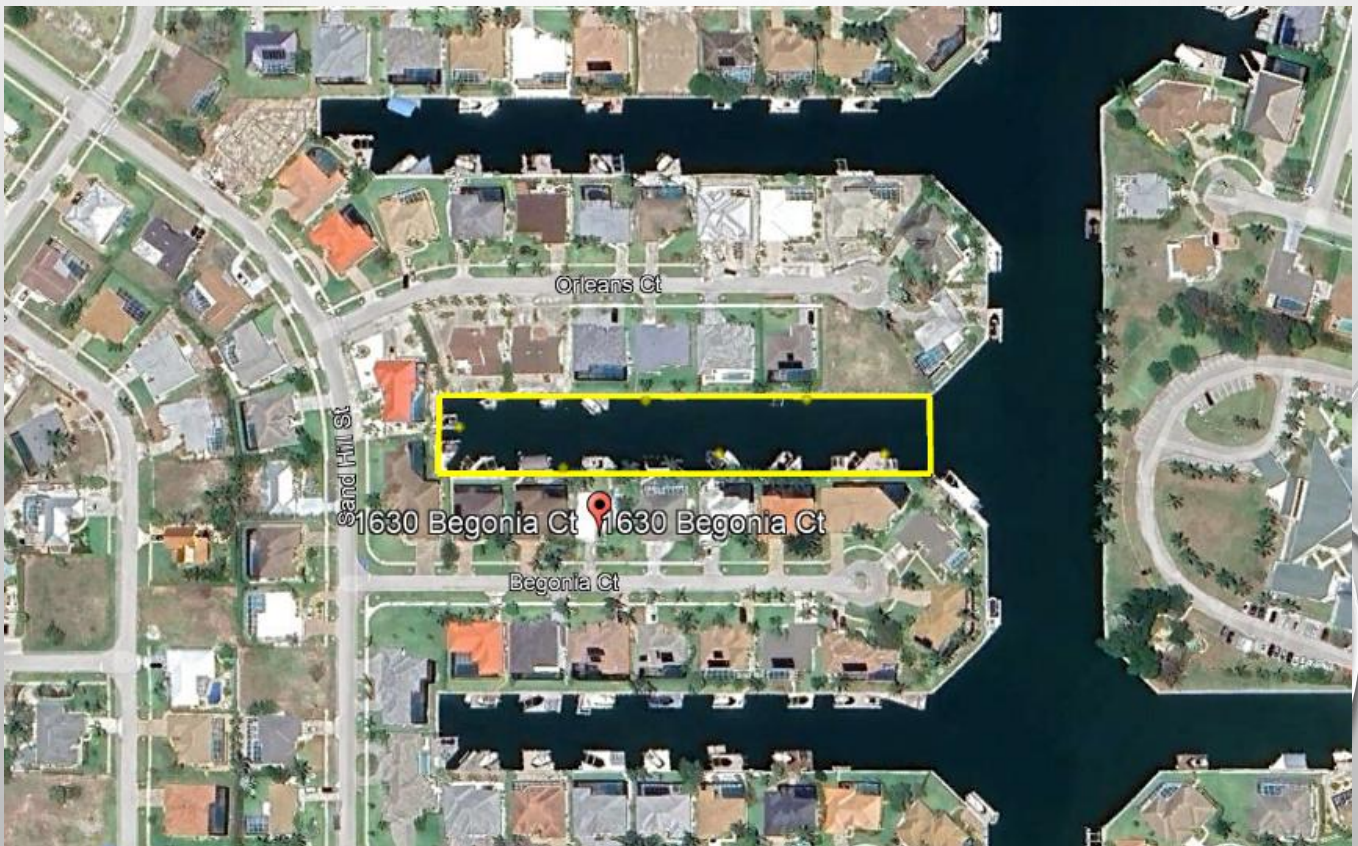
BIO-HEALTH POD SYSTEMS



Patented

By  **RIGERO**

Orleans/Begonia Canal
Marco Island, FL



RIGERO HQ

855.755.0445

info@righero.com

Rich Baum

248.761.7093

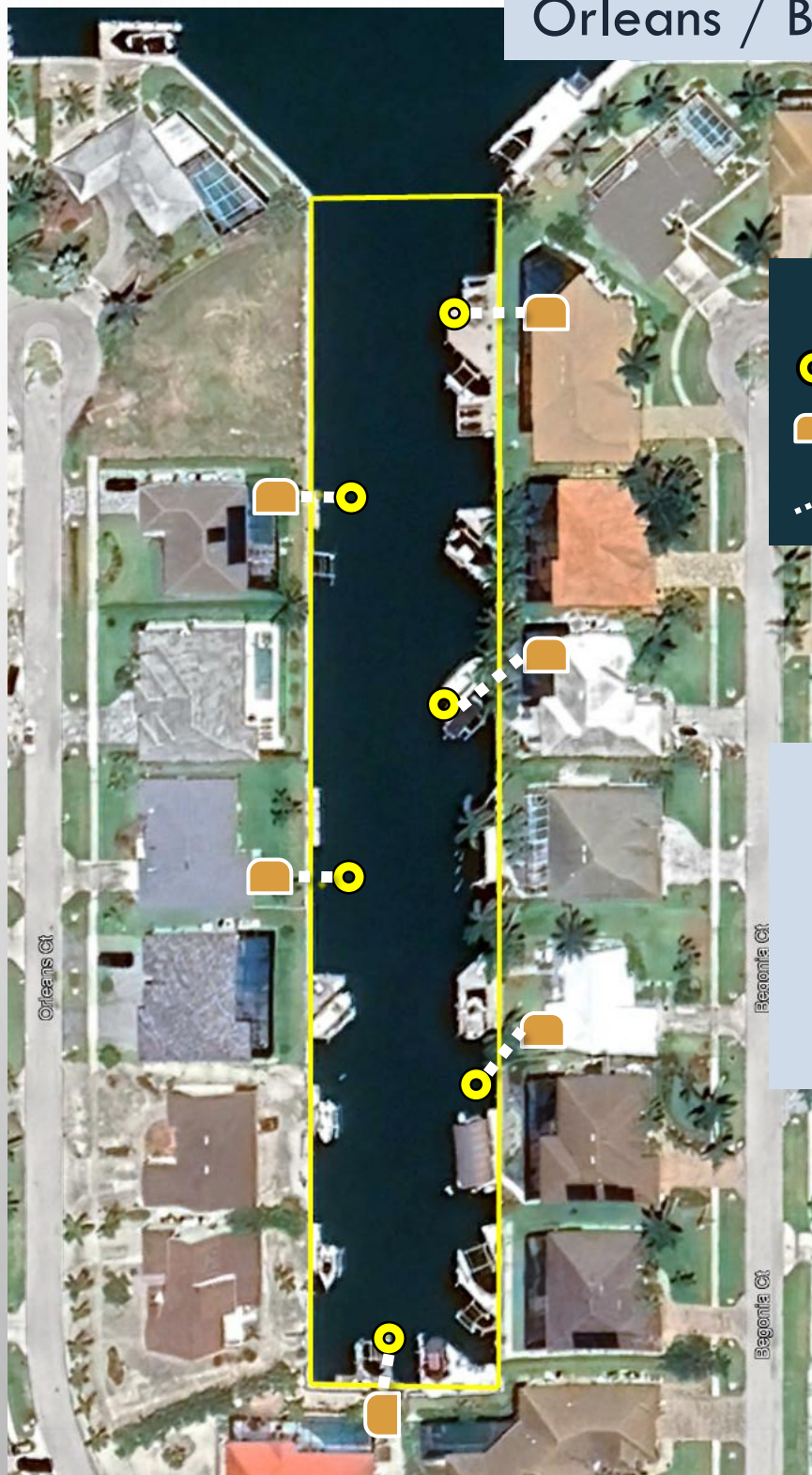
rich@righero.com

Roy Cole




248.640.1149

roy@righero.com

Orleans / Begonia Canal



Key

-  Bio-Health Pod
-  Air Pump
-  Air Hose

Pond Details

1.45 Acres
635 Ft Long

Equipment

6 Bio-Health Pod
100 Nano Pods

System Cost

Description	Qty	Unit Price	Total Cost
Bio-Health Pod Dock Mount System, (Includes 60 Nano Pods, 300 ft Weighted Air Hose) MSRP	6	\$6,500.00	
*6 UNIT Bio-Health Pod System Membership Pricing			\$21,000.00
Additional Nano Pods (Case of 10)	4	\$690.00	\$2,760.00
Additional Weighted Hose (Per Foot) If needed TBD		\$2.50	
Installation & Training			\$4,600.00
Shipping Via LTL Freight			\$850.00
Total			\$29,210.00

- Add sales tax where applicable.
- Each BHP Kit comes with 10 Nano Pods. Depending on the size and shape of the body of water Extra Nano Pods are added to increase the treatment area of the system.
- Each BHP Kit comes with Air Hose for dock mounts or Weighted Air Hose for anchor mounts. Actual total length of hose needed is determined by locations of available electrical outlets and placement of Bio-Health Pods in the water.
- This is an estimate. Adjustments to system quantity and equipment will change total cost.
- Estimate good for 60 days.

Cost After 1st Season

Standard Treatment Option

Recharge Every 8 Weeks

Recharge Kits (1 Per Season Per BHP)

Includes **6 Bio-Health Blend Cartridges & 1 Nest Layer**

Description	Qty	Price	Total Cost
Recharge Kit with 6 Bio-Blend Cartridges & 1 Nest Layer	6	\$950.00	\$5,700.00

Intensive Treatment Option

Recharge Every 4 Weeks

Recharge Kits (1 Per Season Per BHP)

Includes **12 Bio-Health Blend Cartridges & 1 Nest Layer**

Description	Qty	Price	Total Cost
Recharge Kit with 12 Bio-Blend Cartridges & 1 Nest Layer	6	\$1,250.00	\$7,500.00

Every 4 to 5 Seasons

Refresh Maintenance Kit (1 for Each Per Bio-Health Pod Every 4-5 Years)

Description	Price
Refresh maintenance kit recommended once every 3-4 years (10 Nano Pods and a new diffuser and manifold assembly)	\$690.00 Each

Add sales tax where applicable.

Plug & Go Kit



- Bio-Health Pod
- Faux Rock Pump Encloser
- Air Hose
- Grow Nest (in BHP)
- Hiblow Air Pump
- Pole Mount Kit or Anchor Mount Kit
- 10 Nano Pods
- 3 Bio-Blend Cartridges

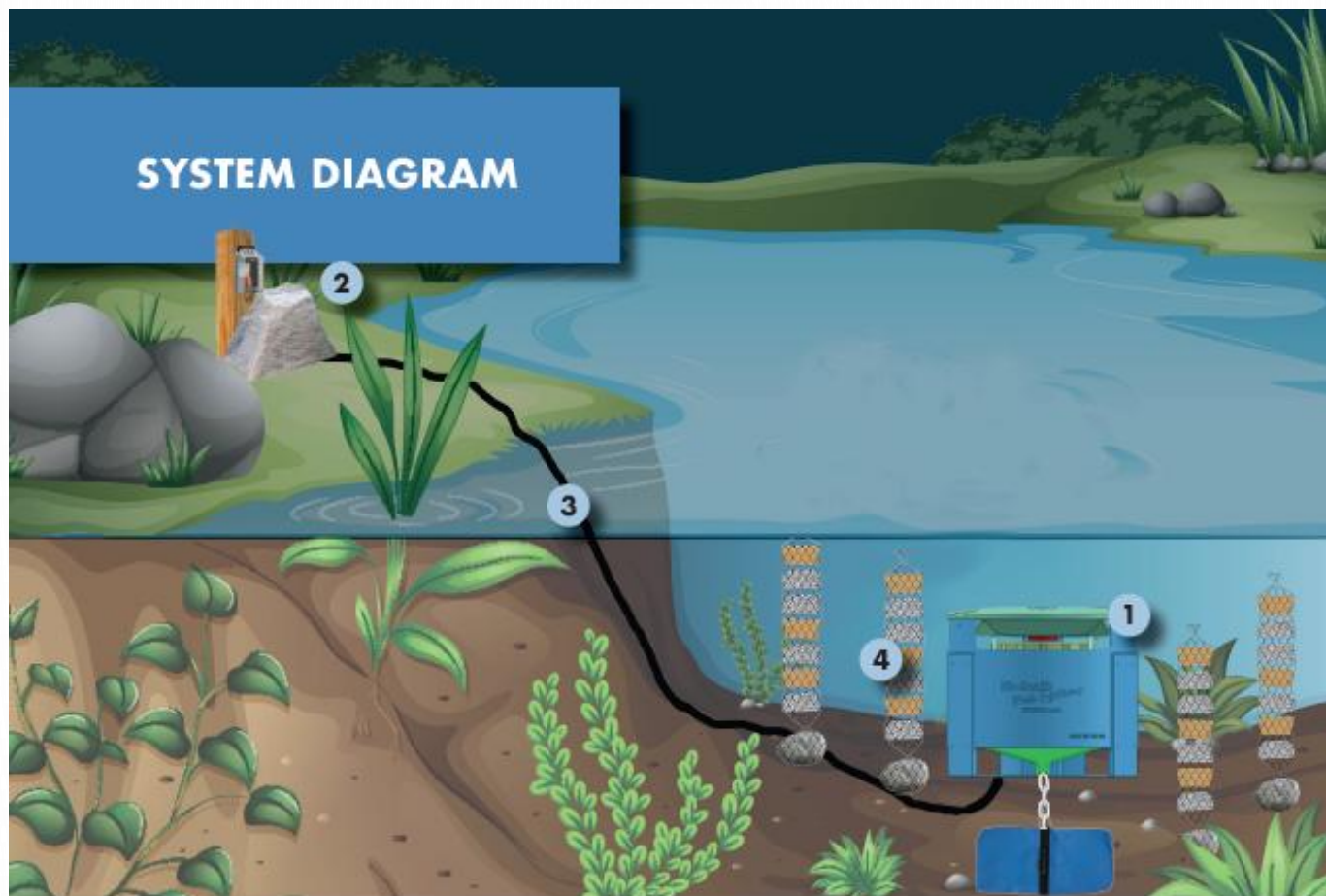
Performance Objectives & Expectations

BIO HEALTH POD SYSTEMS deliver a continuous 24/7 treatment, providing aeration while generating beneficial bacteria that aggressively consume and digest organic muck and excessive nutrients in the water column. This reduces the effects that lead to algal blooms and invasive weed growth.

BIO HEALTH POD SYSTEMS are a natural and safe approach to solve your aquatic challenges without using harmful chemicals.

BIO HEALTH POD SYSTEMS are designed to draw down organic bottom muck and reduce nutrient loads in the water column to healthy levels. Systems are left in place to maintain and manage water quality moving forward. Therefore Bio-Health Pod Systems serve as both a short-term and a long-term solution improving the health of aquatic systems.

SYSTEM DIAGRAM



- 1 **BHP:** Find a location where the Bio-Health Pod can project to all areas of the pond. Ideal depth is around 4 to 5 feet.
- 2 **Air Pump:** Locate the Air Pump near the 110 volt outlet that is closest to the BHP. Keep the pump at a high point so it will not get flooded in the event of a large storm. The pump is covered with the faux rock.
- 3 **Weighted Air Hose:** When running the hose to the Bio-Health Pod it is important to keep it away from deeper water. Deep water will significantly reduce air flow and system performance resulting in increased wear and tear on the pump. The recommended depth is less than 5 ½ foot of water.
- 4 **Nano Pods:** Place one Nano Pod every 25 feet around the edge of the pond. Distance from the edge is determined by depth. The ideal depth for the Nano Pods is between 2 ½ to 3 ½ feet. If the pond is shallow, Nano Pods can be shortened. In ponds that are wide, additional Nano Pods may be necessary for the center of the pond.



MORE MUCK MEANS MORE WEEDS

REDUCE THE NUTRIENTS - REDUCE THE MUCK - REDUCE WEEDS & ALGAE

As muck gets deeper over time it causes more invasive weed growth and algae blooms for several reasons:

- Muck is “rocket fuel” for invasive weeds and algae
- Every year the volume of muck in your water increases. This fact sets off a chain of events: water depth and volume decrease, water temperatures go up, and more sunlight reaches the bottom. All these factors promote more growth of invasive weeds and heavier more frequent algal blooms.
- Heavy and frequent algal blooms and prolific nuisance aquatic weeds take up available dissolved oxygen. Unfortunately, this leaves less DO for healthy aquatic life.

CHEMICAL TREATMENTS ARE NOT THE ANSWER

- Herbicides and algicides are very commonly used to kill invasive weeds and algae. Unfortunately, the dead plant material sinks to the bottom where it decomposes adding more bio-mass to the already existing muck. As the muck deepens the weeds and algae come back more quickly and chemical treatments are continued and often increased in response. Over time, the herbicides and algicides become less and less effective. The vicious cycle of chemical treatment continues for many years until the volume of muck is overwhelming. The water will often smell, and healthy aquatic life is sparse or virtually non-existent.
- Continuing to drop chemicals to treat weeds and algae will only make things worse.

BIO-HEALTH POD SYSTEMS solve the problem of weeds and algae blooms by generating beneficial bacteria that aggressively consume and digest the muck and excessive nutrients in the water column 24/7. As the muck is reduced, the conditions that lead to weeds and algae are taken away leaving a healthy aquatic system for you to enjoy.

Our Customers

500+ BHPs

100+ Lakes

250+ Ponds

Campgrounds

Private Ponds

HOAs

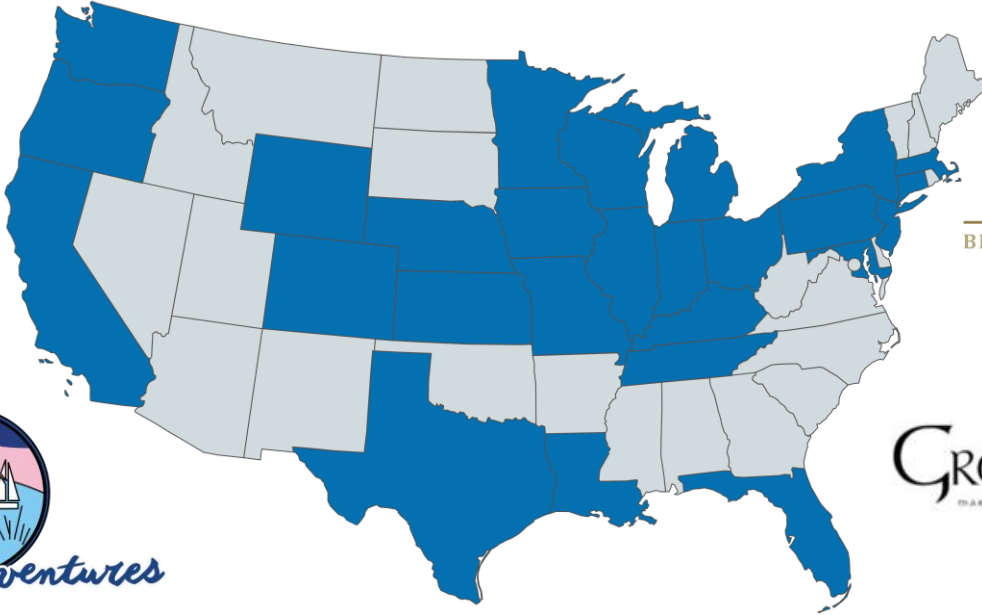
Agriculture

Marinas

Golf Ponds

Government

Lakes



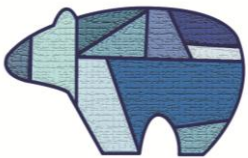
**BROWN DEER PARK
GOLF COURSE**
◆ Est. 1929 ◆



Outdoor Adventures



CANTON
Community



Indigo Bluffs



Pheasant Run
Golf Club



BEYONDER
HOLDINGS