

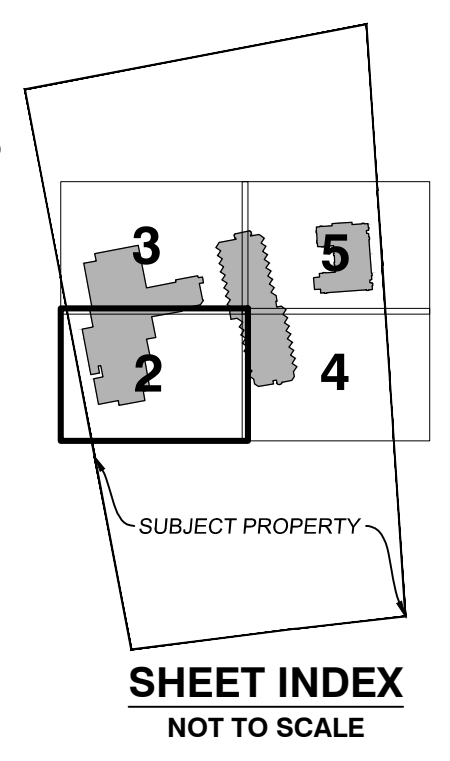
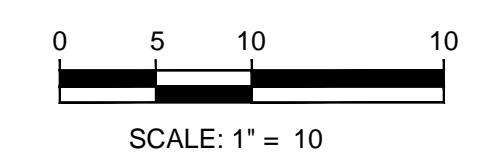
H:\Survey\Digital\31378_50\wp3137850-LTS.DWG DATE: 11/25/2014 8:49 AM BY: Mike Flowers



ONE STORY C.B.S.
9,417 s.f. +/-
NOTE:
(4,900 s.f. +/-)
office area on
second floor.)

Legend

- ⊙ = FOUND 5/8" IRON ROD (R)
W/CAP P.S.M. #4636
- = FOUND IRON PIPE
(AS NOTED)
- = FOUND CONC. MONUMENT
(AS NOTED)
- (N.R.) = NON-RADIAL
- ⊙ = FOUND NAIL & DISK
(AS NOTED)
- ⊙ = FOUND NAIL
(AS NOTED)
- ⊙ = FOUND DRILL HOLE
- = SET 5/8" IRON ROD (R)
W/CAP LB #4636
- ⊙ = SET DRILL HOLE
- ✱ = PALM TREE
- ✱ = MISC. TREE/PLANT
- ✱ = OAK TREE
- (M) = FIELD MEASUREMENT
- (R) = RECORDED OR PLAT
MEASUREMENT
- (TYP.) = TYPICAL
- (C) = CALCULATED
- R-O-W = RIGHT OF WAY
- PCP = PERMANENT CONTROL
POINT
- P.I. = POINT OF INTERSECTION
- P.C. = POINT OF CURVATURE
- P.T. = POINT OF TANGENCY
- P.R.C. = POINT OF REVERSE CURVE
- P.O.L. = POINT ON LINE
- OHU = OVERHEAD WIRE
- ELEV. = ELEVATION
- X.XX = EXISTING ELEVATION
- X.XX = PROPOSED ELEVATION
- F.F. = FINISHED FLOOR
- G.F. = GARAGE FLOOR
- CL = CENTER LINE
- ° = DEGREES
- ' = FEET OR MINUTES
- " = INCHES OR SECONDS
- CONC. = CONCRETE
- C.B.S. = CONC. BLOCK & STUCCO
- CATV = CABLE TELEVISION
- UTS = UNDERGROUND TELEPHONE
SERVICE
- R = RADIUS
- Δ = DELTA
- L = LENGTH
- C = CHORD
- C.B. = CHORD BEARING



EMK Consultants of Florida, Inc.
engineers surveyors land planners
7815 North Dale Mabry Highway, Suite 200 Tampa, FL 33611 813.931.8900
fax 813.931.5848 on the web: www.emkfla.com e-mail: emk@emkfla.com
Copyright © 2000 EMK Consultants of Florida
LB No. 4836

NO.	DATE	BY	REVISIONS

LIMITED TOPOGRAPHIC SURVEY
HILTON MARCO ISLAND BEACH RESORT AND SPA
560 SOUTH COLLIER BOULEVARD
MARCO ISLAND, FLORIDA 34145

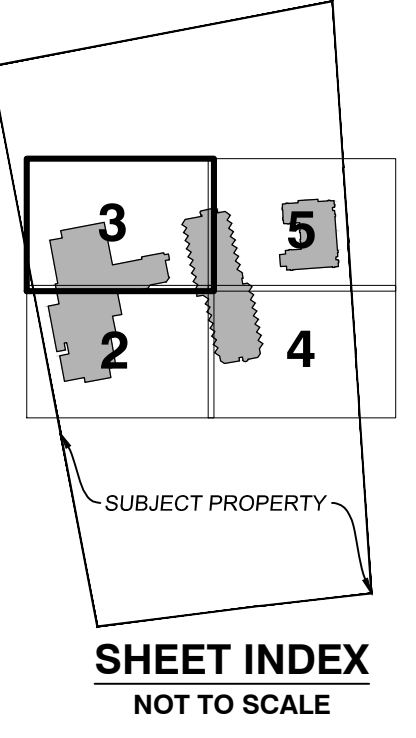
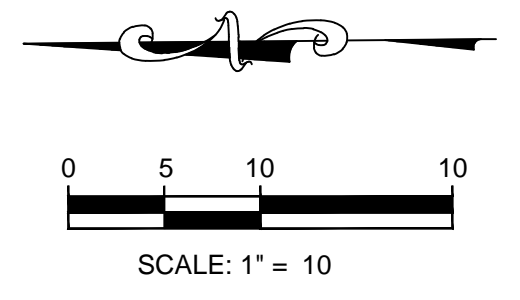
DRAWN BY: MF
CHECKED BY: DP
SCALE: 1" = 10'
RELEASE DATE: 4/29/2015
PARTY CHIEF: RQ
FIELD BOOK: 806
PAGE: 34
CAD FILE: 3137850-LTS.DWG
JOB NUMBER: 31378.50
SHEET: 2 OF 5

H:\Survey\Drawings\313785-LTS.DWG DATE: 11/25/2014 8:49 AM BY: Mike Flowers



Legend

- ⊙ = FOUND 5/8" IRON ROD (IR) W/CAP. P.S.M. #4656
- = FOUND IRON PIPE (AS NOTED)
- = FOUND CONC. MONUMENT (AS NOTED)
- (N.R.) = NON-RADIAL
- ⊙ = FOUND NAIL & DISK (AS NOTED)
- ◇ = FOUND NAIL (AS NOTED)
- ⊙ = FOUND DRILL HOLE
- = SET 5/8" IRON ROD (IR) W/CAP. LB #4656
- ⊙ = SET DRILL HOLE
- ✱ = PALM TREE
- ✱ = MISC. TREE/PLANT
- ⊙ = OAK TREE
- (M) = FIELD MEASUREMENT
- (R) = RECORDED OR PLAT MEASUREMENT
- (C) = CALCULATED
- R-O-W = RIGHT OF WAY
- PCP = PERMANENT CONTROL POINT
- P.I. = POINT OF INTERSECTION
- P.C. = POINT OF CURVATURE
- P.T. = POINT OF TANGENCY
- P.R.C. = POINT OF REVERSE CURVE
- P.O.L. = POINT ON LINE
- OHU = OVERHEAD WIRE
- ELEV. = ELEVATION
- X-X- = EXISTING ELEVATION
- - - = PROPOSED ELEVATION
- F.F. = FINISHED FLOOR
- G.F. = GARAGE FLOOR
- C.L. = CENTER LINE
- ' = FEET OR MINUTES
- " = INCHES OR SECONDS
- CONC. = CONCRETE
- C.B.S. = CONC. BLOCK & STUCCO
- CATV = CABLE TELEVISION
- UTS = UNDERGROUND TELEPHONE SERVICE
- R = RADIUS
- Δ = DELTA
- L = LENGTH
- C = CHORD
- C.B. = CHORD BEARING



LIMITED TOPOGRAPHIC SURVEY

HILTON MARCO ISLAND BEACH RESORT AND SPA
560 SOUTH COLLIER BOULEVARD
MARCO ISLAND, FLORIDA 34145

DRAWN BY: MF
CHECKED BY: DP
SCALE: 1" = 10'
RELEASE DATE: 4/29/2015
PARTY CHIEF: RQ
FIELD BOOK: 806
PAGE: 34
CAD FILE: 3137850-LTS.DWG
JOB NUMBER: 31378.50
SHEET: **3 OF 5**

EMK Consultants of Florida, Inc.
engineers, surveyors, land planners
7815 North Dale Mabry Highway, Suite 200 Tampa, FL 33611 • 813.931.8900
fax 813.931.5848 • on the web: www.emkfla.com • e-mail: emk@emkfla.com
Copyright © 2000 EMK Consultants of Florida
IB No. 4836

NO.	DATE	BY	DESCRIPTIONS

REVISIONS

H:\Survey\Digital\3137850\3137850-LTS.DWG DATE: 11/25/2014 8:49 AM BY: Mike Flowers



- 1 CHLORINE FILLER CAP
- 2 ACID FILLER CAP
- 3 CONC. PAD w/ HEATER
- 4 FILTER UNIT

LIMIT OF TOPOGRAPHIC SURVEY
PER REQUEST OF CLIENT

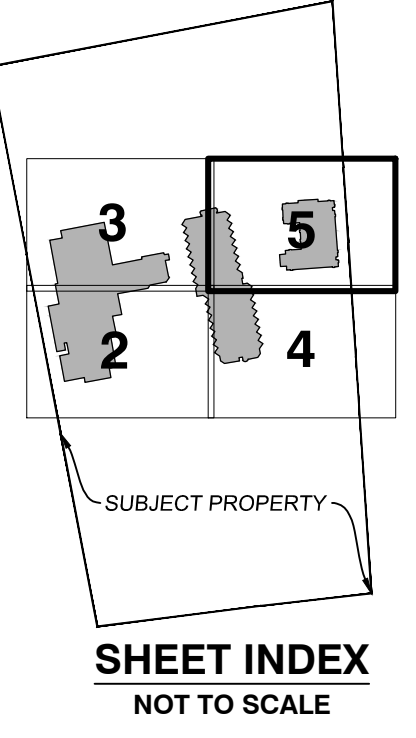
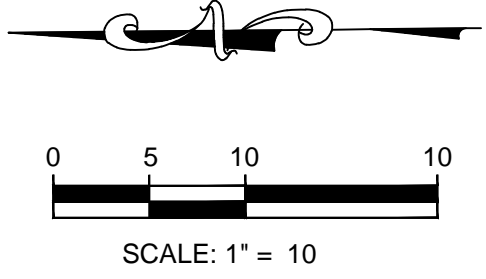
SPA & EXERCISE BUILDING

9,417 s.f. +/-

RAISED CONC. AC
PAD - 8 UNITS
(4.8' x 34.3')

Legend

- ⊙ = FOUND 5/8" IRON ROD (R)
W/CAP P.S.M. #4656
- = FOUND IRON PIPE
(AS NOTED)
- = FOUND CONC. MONUMENT
(AS NOTED)
- (N.R.) = NON-RADIAL
(AS NOTED)
- ⊙ = FOUND NAIL & DISK
(AS NOTED)
- ◇ = FOUND NAIL
(AS NOTED)
- ⊙ = FOUND DRILL HOLE
- = SET 5/8" IRON ROD (R)
W/CAP LB #4636
- ⊙ = SET DRILL HOLE
- ✱ = PALM TREE
- 🌳 = MISC. TREE/PLANT
- 🌳 = OAK TREE
- (M) = FIELD MEASUREMENT
- (R) = RECORDED OR PLAT
MEASUREMENT
- (TYP.) = TYPICAL
- (C) = CALCULATED
- R-O-W = RIGHT OF WAY
- PCP = PERMANENT CONTROL
POINT
- P.I. = POINT OF INTERSECTION
- P.C. = POINT OF CURVATURE
- P.T. = POINT OF TANGENCY
- P.R.C. = POINT OF REVERSE CURVE
- P.O.L. = POINT ON LINE
- OH = OVERHEAD WIRE
- ELEV. = ELEVATION
- X-XX = EXISTING ELEVATION
- (E) = PROPOSED ELEVATION
- F.F. = FINISHED FLOOR
- G.F. = GARAGE FLOOR
- C.L. = CENTER LINE
- ° = DEGREES
- ' = FEET OR MINUTES
- " = INCHES OR SECONDS
- CONC. = CONCRETE
- C.B.S. = CONC. BLOCK & STUCCO
- CATV = CABLE TELEVISION
- UTS = UNDERGROUND TELEPHONE
SERVICE
- R = RADIUS
- Δ = DELTA
- L = LENGTH
- C = CHORD
- C.B. = CHORD BEARING



EMK Consultants of Florida, Inc.
 engineers surveyors land planners
 7815 North Dale Mabry Highway, Suite 200 Tampa, FL 33611 813.931.8900
 fax 813.931.5848 on the web: www.emkfla.com e-mail: emk@emkfla.com
 Copyright © 2009 EMK Consultants of Florida

DESCRIPTIONS	DATE	BY

REVISIONS

LIMITED TOPOGRAPHIC SURVEY

HILTON MARCO ISLAND BEACH RESORT AND SPA
 560 SOUTH COLLIER BOULEVARD
 MARCO ISLAND, FLORIDA 34145

DRAWN BY: MF
 CHECKED BY: DP
 SCALE: 1" = 10'
 RELEASE DATE: 4/29/2015
 PARTY CHIEF: RQ
 FIELD BOOK: 806
 PAGE: 34
 CAD FILE: 3137850-LTS.DWG
 JOB NUMBER: 31378.50
 SHEET: **5 OF 5**

MARRIOTT OWNER
 600 S. COLLIER
 MARCO ISLAND
 O.R. BOOK 4

W.D. COMPANY LLC
 DACE 3305

A16 - A24
9 SPACES

A25 - A32
8 SPACES

S1 - S11
11 SPACES

S. HOTEL

160' WIDE UTILITY ESMT.
O.R. BOOK 4403, PG. 0124

SCALE: 1" = 10'